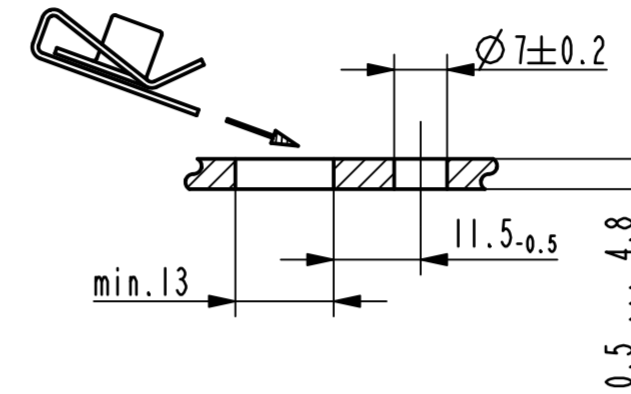
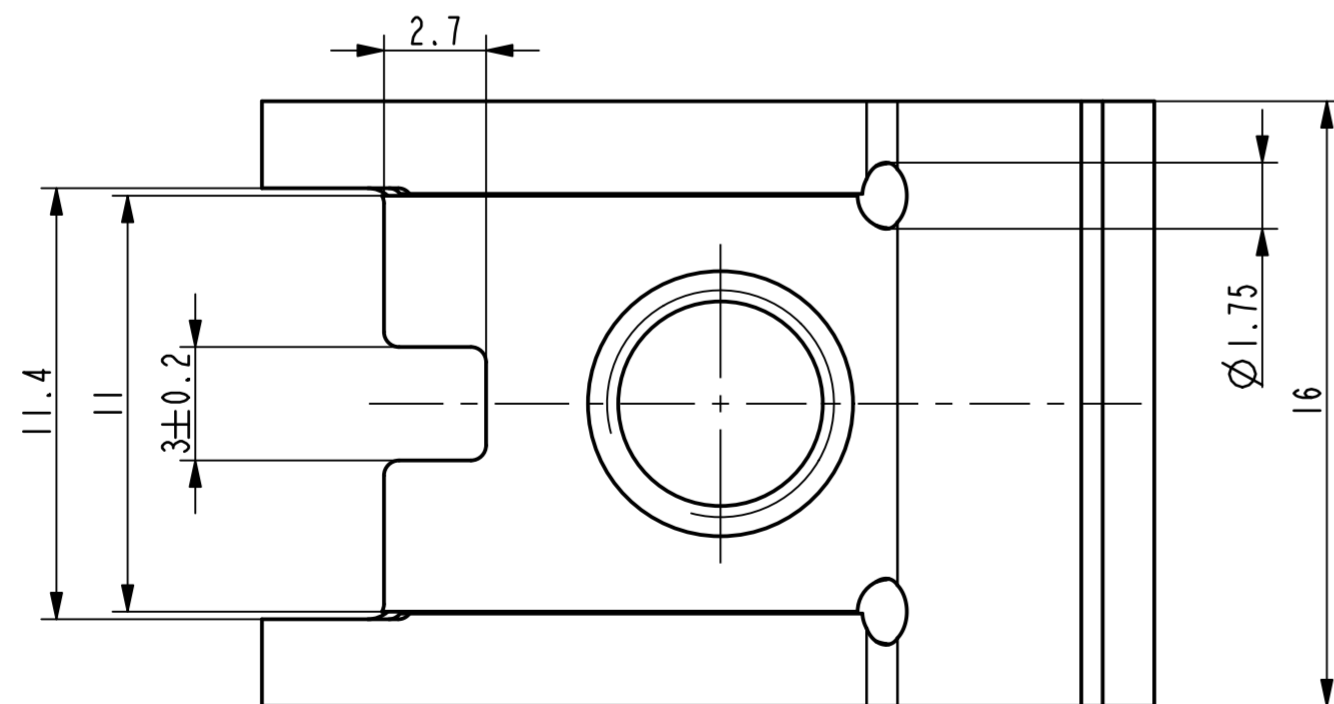
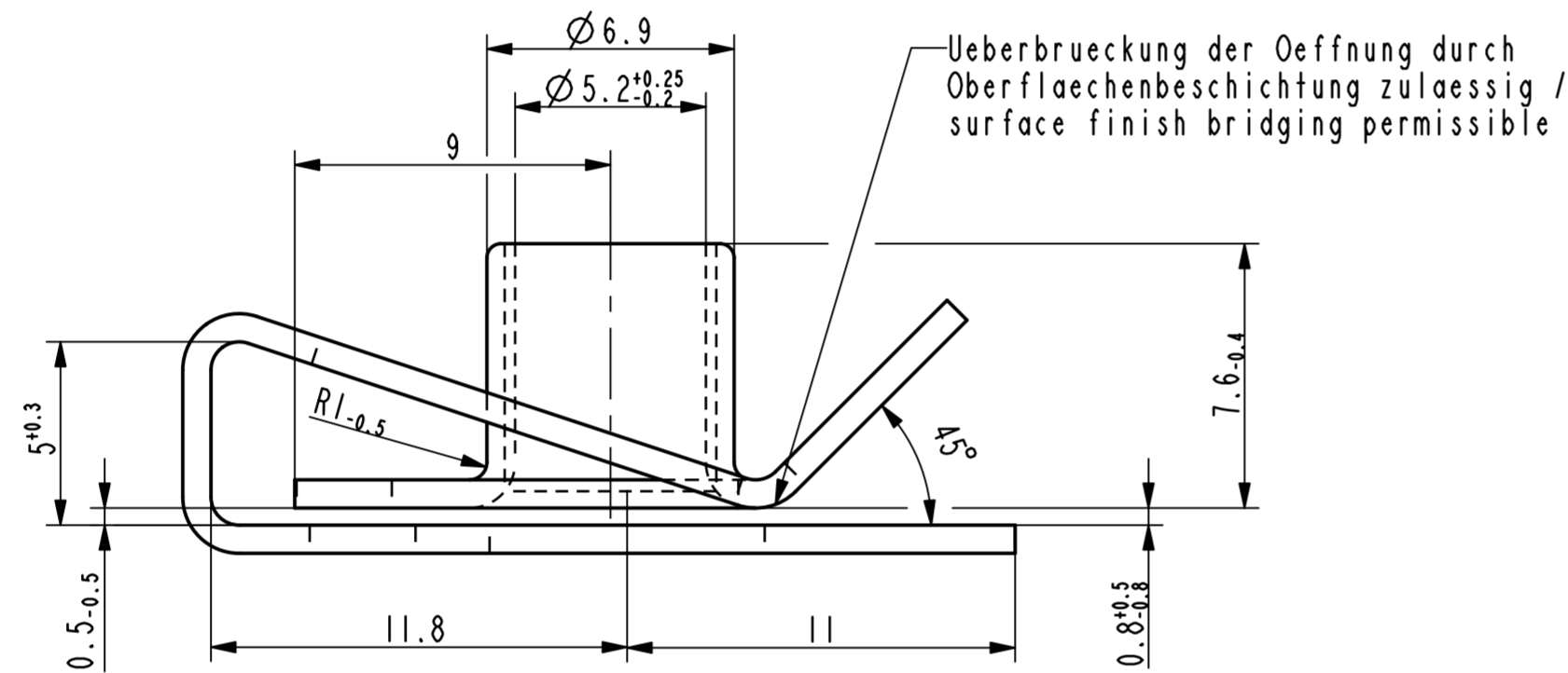
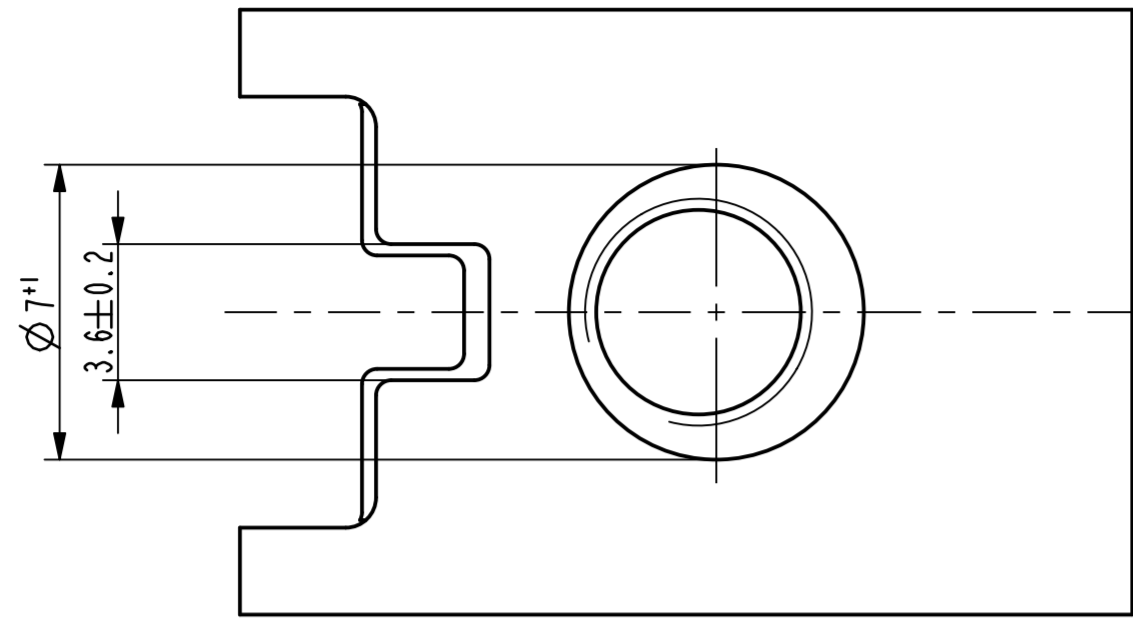
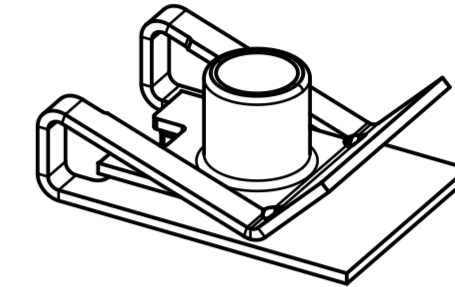


Schwergaengigkeit des Gewindes durch
Oberflaechenbeschichtung zulaessig /
slow thread engagement caused by the surface
finish permissible

Gewindedurchzug kann nur mit lehrenhaltiger
M6 Schraube geprueft werden /
the thread strength can only be tested
with a calibrated M6 screw gauge



Einbausituation /
assembly situation
1:1



Isometrische Ansicht /
isometric view
2:1

Vor Auslegung einer automatisierten Verarbeitung des Teils
sollte Ruecksprache mit Fa. ARaymond gehalten werden.
Fully automatic processing of the part requires prior
consultation with ARaymond.

nicht bemaste Biegeinnenradien R0.8 /
undimensioned bendradii R0.8

-	-	-	-	-
-	-	-	-	-
-	-	-	-	-
-	-	-	-	-
-	-	-	-	-
-	-	-	-	-
-	-	-	-	-
-	-	-	-	-
Be	ix	Zeichnung ueberarbeitet nach AR-Gruppenstandard, Teil unveraendert	24.02.12	toH
-	-	Oberflaechenvariante -01 (3300) entfernt	-	-
Rev.	Anzahl/ quantity	Aenderungsbeschreibung / modification description	Datum/date	Name



Teichstrasse 57
Germany - 79511 Loerrach
Phone +49 (0) 7621 174-0
Fax +49 (0) 7621 174-225

Bei Verstaendnisproblemen beantragen Sie bitte beim Absender die deutsche Fassung vor jeder Anwendung.
"CONDITIONS OF USE"
This drawing and all information (the "Drawing") disclosed are the exclusive property of ARaymond.
By using this Drawing the Addressee acknowledges and accepts that this Drawing
(1) is covered by ARaymond' intellectual property rights or know-how and
(2) is provided under the following conditions who represent a Deposit Agreement.
This Drawing is for Addressee' internal use only limited to its estimation.
Without prior written consent of ARaymond, no permission or rights for any purpose, is hereby granted, such as, without any limitation,
(1) the copy, in part or entirely,
(2) and/or the presentation, in part or entirely, to any other third party outside the Addressee' company or in the company but with no interest
(3) and/or the distribution of the Drawing, in part or entirely, in any medium
(4) and/or the creation of any derivative work.
In case of breach of these conditions, Addressee shall indemnify ARaymond from and against all damages (compensatory or consequential),
costs, expenses and charges, caused or arising out of or attributable to its willful misconduct, fraud, negligence, infringement of
ARaymond' intellectual property rights. If the Addressee does not accept these conditions, please notify ARaymond' sender immediately.

Intellectual property rights	vorbehalten / all rights reserved		Classification code	AAACC	
Ersatz fuer/ substitute for	017099.C.01/Bd/04.09.08	Entw.Ref./ dev.ref.	Projekt-Nr./ project no.	EM 9405	
Masstab/ scale	Format	Allgemeintoleranz/ general tolerance	Datum/ date	24.02.2012	
5:1	A2	±0.3 / ±5°	Erstellt von/ prepared by	T. Hess	
Projektion / projection	ALL DIMENSIONS ARE IN MILLIMETERS		Freigegeben/ approved	20120224123541	
Blechklaetzel/ net. thickness DIN EN 10140	0.80	Volumen/ volume (mm³)	587.8	Gewicht/ weight (g)	4.7

Oberfl./
finish

metallhaltige Korrosionsschutzbeschichtung, Farbe silber, GZ	Oberfl. Code/ finish code
metallic corrosion protection coated, colour silver, lubricated	4001

Werkstoffbehandl./
material treatment

zwischenstufenverguetet / austempered	Met. code
365 ... 465 HV 5	1040

Werkstoff/
material

C45E DIN EN 10132-3	Met. code
	1040

Bezeichnung/
title

Mehrbereichssteckmutter
fuer Gewinde M6
sheet metal nut
for thread M6

Teil-Nr./
part no.

017099-0-02	Drawing type
	C:Customer

Kundenteile-Nr. / customer part no.

-	Blatt / sheet	1 / 1
---	---------------	-------

CAD system & version

ProE WF4	Dateiname / filename	017099-0C00
----------	----------------------	-------------



017099-0-03	verzinkt / passiviert farblos zinc plated / passivated colourless	3250
-------------	--	------

Teil-Nr. / part no.	Oberflaechen / Farbe / finish / colour	Oberfl. Code/ finish code
	Ausfuhrung / Execution	