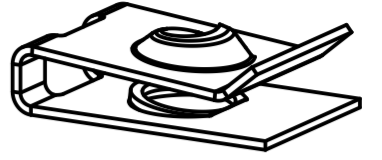
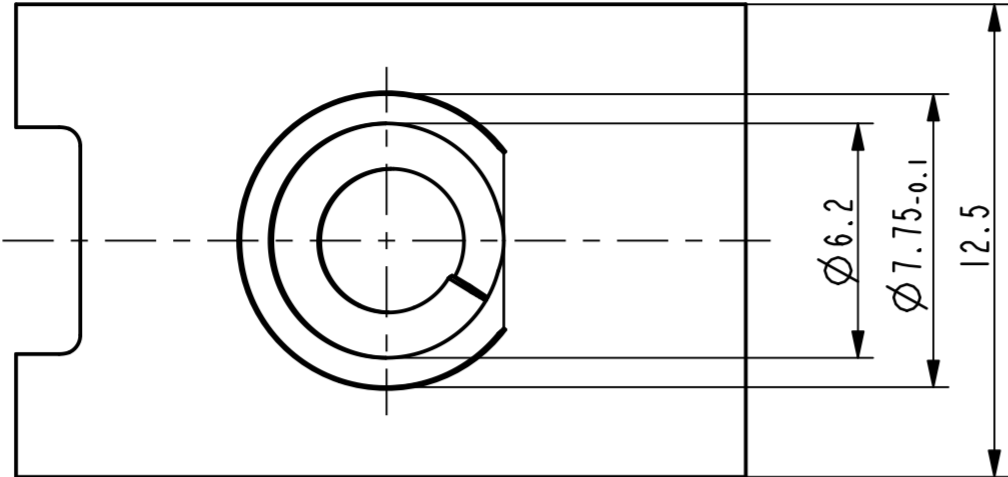
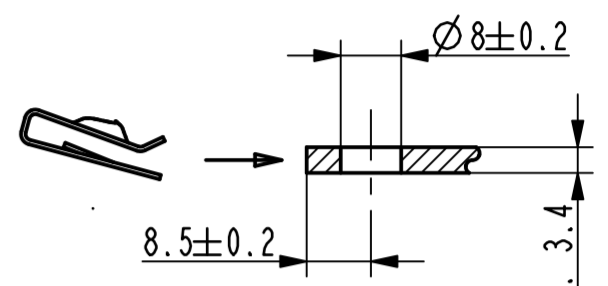


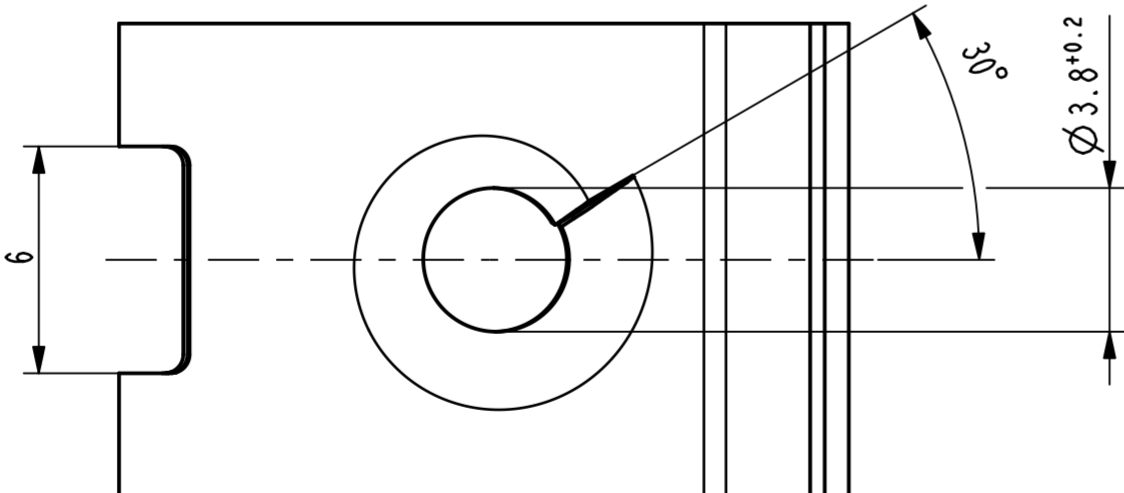
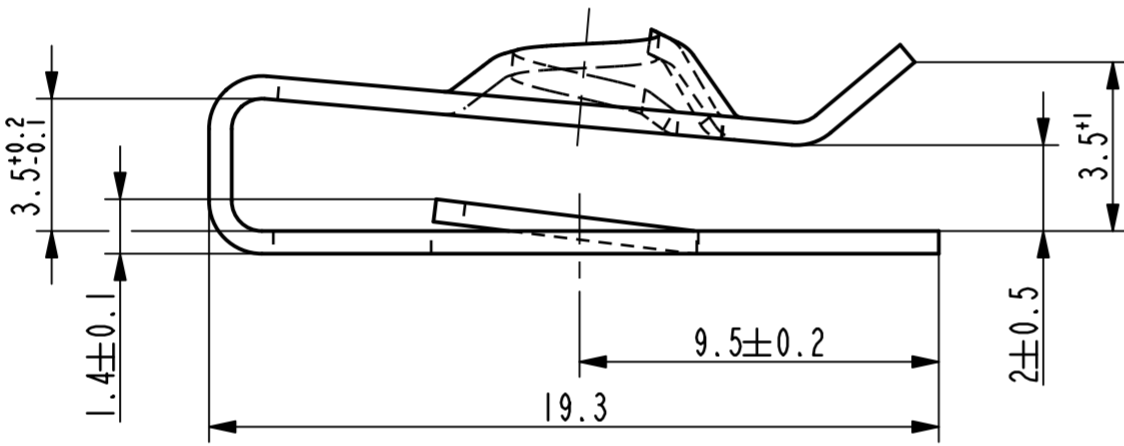
Vor Auslegung einer automatisierten Verarbeitung des Teils sollte Rücksprache mit Fa. A.Raymond gehalten werden.
 Fully automatic processing of the part requires prior consultation with A.Raymond GmbH.



3D-Ansicht /
isometrical view
2:1



Einbausituation /
assembly situation
1:1



-	-	-	-	-
-	-	-	-	-
-	-	-	-	-
-	-	-	-	-
-	-	-	-	-
-	-	-	-	-
-	-	-	-	-
-	-	-	-	-
-	-	-	-	-

Bd	-	Oberflächenvariante entfernt (3000, 3300)	01.03.11	mj
Rev.	Anzahl/quality	Änderungsbeschreibung / modification description	Datum/date	Name
				Teichstrasse 57 Germany - 79511 Loerrach Phone +49 (0) 7621 174-0 Fax +49 (0) 7621 174-225

CONDITIONS OF USE
 This drawing and all information (the "Drawing") disclosed are the exclusive property of A.Raymond. By using this Drawing the Addressee acknowledges and accepts that this Drawing (1) is covered by A.Raymond' Intellectual property rights or know-how and (2) is provided under the following conditions who represent a Deposit Agreement. This Drawing is for Addressee' Internal use only limited to its estimation. Without prior written consent of A.Raymond, no permission or rights for any purpose, is hereby granted, such as, without any limitation, (1) the copy, in part or entirely, (2) and/or the presentation, in part or entirely, to any other third party outside the Addressee' company or in the company but with no interest (3) and/or the distribution of the Drawing, in part or entirely, in any medium (4) and/or the creation of any derivative work. In case of breach of these conditions, Addressee shall indemnify A.Raymond from and against all damages (compensatory or consequential), costs, expenses and charges, caused or arising out of or attributable to its willful misconduct, fraud, negligence, infringement of A.Raymond' Intellectual property rights. If the Addressee does not accept these conditions, please notify A.Raymond' sender immediately.

Intellectual property rights	vorbehalten / all rights reserved		Classification code	AABAE
Ersatz fuer / substitute for	012888.c.01/Bc/02.07.2007	Entw.Ref./ dev.ref.	Projekt-Nr./ project no.	
Masstab/ scale	5:1	Format	A2	
Projektion / projection		Allgemeintoleranz/ general tolerance	±0.25 / ±5°	
Datum/ date	01.03.2011		Erstellt von/ prepared by	
Freigegeben/ approved	20110318123411		M. Junge	
Blechkörten/ net. thickness	DIN EN 10140		0.60	
Volumen/ volume (mm³)	266.3		Gewicht/ weight (g)	
			2.1	

Oberfl./ finish: metallhaltige Korrosionsschutzbeschichtung, Farbe silber / metallic corrosion protection coated, colour silver
 Oberfl. Code/ finish code: 5410

Werkstoffbehandl./ material treatment: zwischenstufenverguetet / austempered
 435 ... 535 HV 5

Werkstoff/ material: C67S DIN EN 10132-4
 Met. code: 1000

Bezeichnung/ title: Blechmutter
 fuer Gewinde EN ISO 1478 - ST4.8
 sheet metal nut
 for thread EN ISO 1478 - ST4.8

Teil-Nr./ part no.: 012888-0-03
 Drawing type: C:Customer

012888-0-09	metallhaltige Korrosionsschutzbeschichtung, Farbe silber, GZ metallic corrosion protection coated, colour silver, lubricated	4001
012888-0-08	metallhaltige Korrosionsschutzbeschichtung, Farbe silber, GZ metallic corrosion protection coated, colour silver, lubricated	4050
012888-0-07	phosphatiert / impraegniert phosphated / oiled	5100
012888-0-06	metallhaltige Korrosionsschutzbeschichtung, Farbe silber metallic corrosion protection coated, colour silver	5412
012888-0-05	verzinkt / passiviert farblos zinc plated / passivated colourless	3250
012888-0-04	metallhaltige Korrosionsschutzbeschichtung, Farbe schwarz metallic corrosion protection coated, colour black	5451
Teil-Nr. / part no.	Oberfläche / Farbe / finish / colour	Oberfl. Code/ finish code
Ausführung / Execution		

Kundenteile-Nr. / customer part no.	-	Blatt / sheet	1 / 1
CAD system & version	ProE WF4	Dateiname / filename	012888-0C00