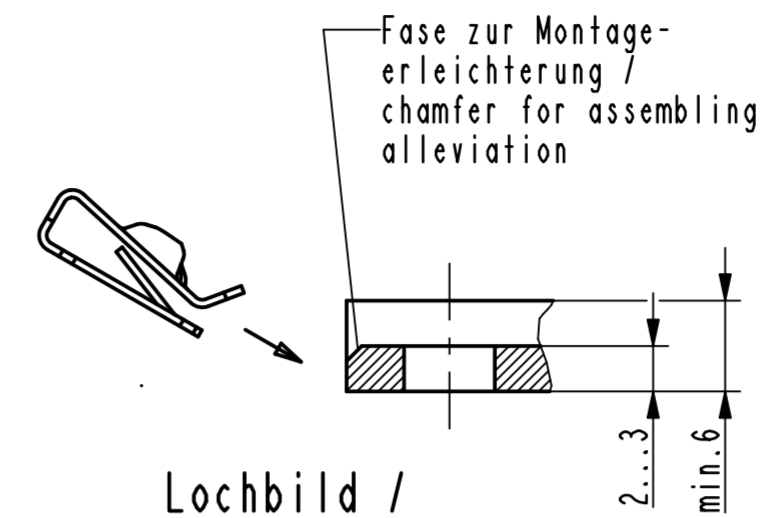
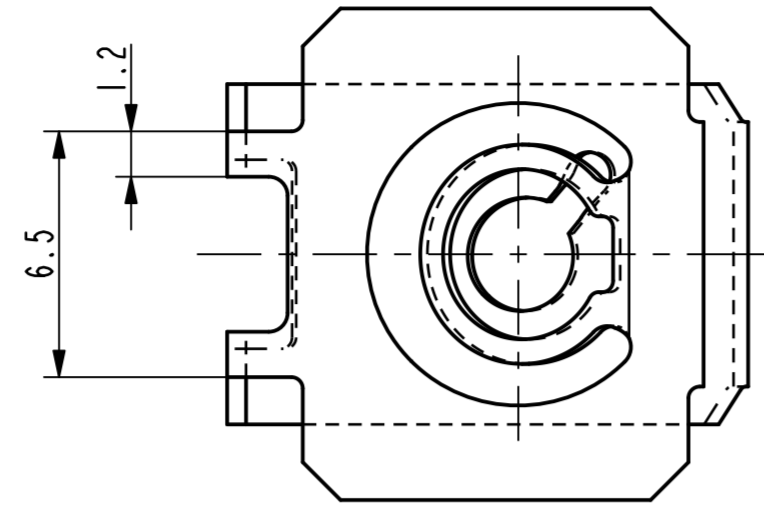
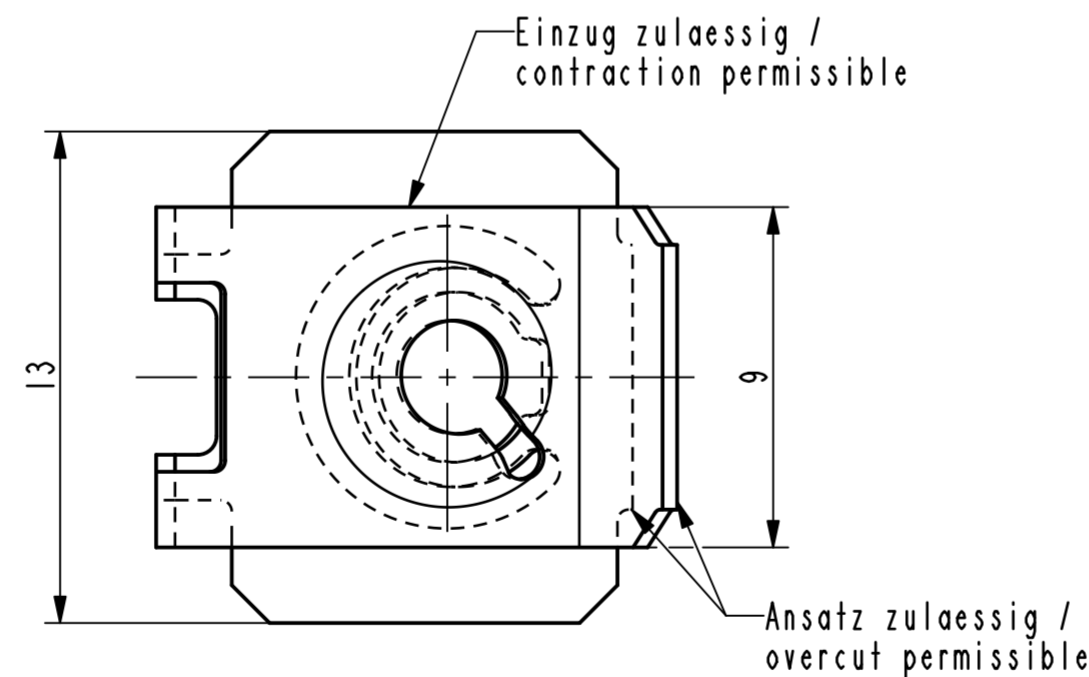
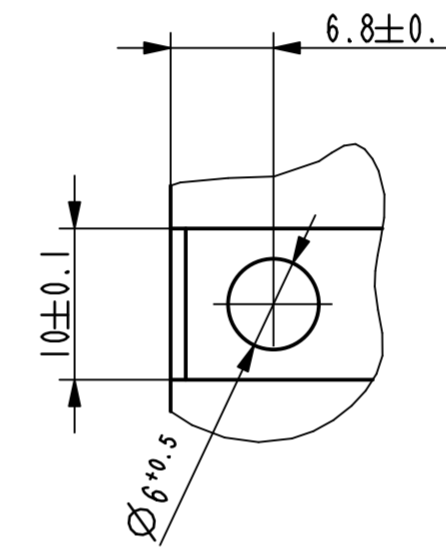
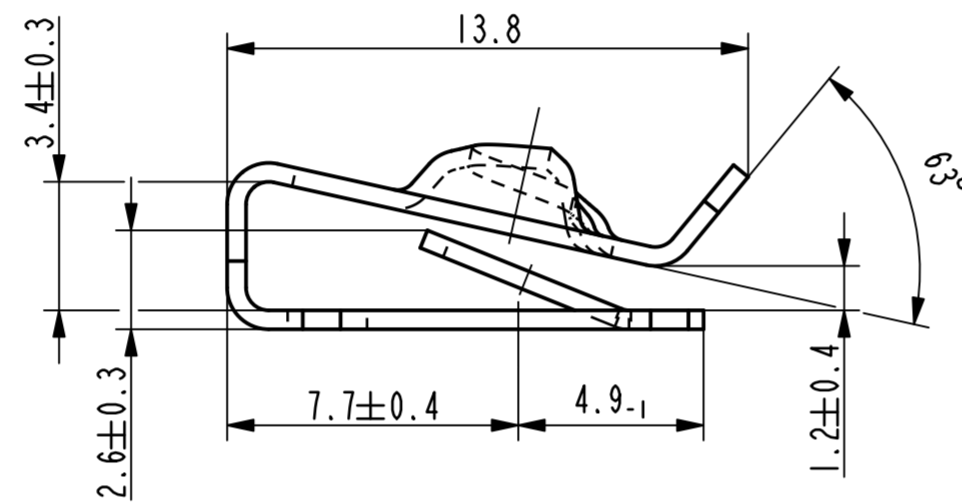


Vor Auslegung einer automatisierten Verarbeitung des Teils sollte Rücksprache mit Fa. A.Raymond gehalten werden.  
 Fully automatic processing of the part requires prior consultation with A.Raymond GmbH.



Isometrische Ansicht /  
 isometric view  
 2:1

Lochbild /  
 hole pattern  
 2:1



-	-	-	-	-
-	-	-	-	-
-	-	-	-	-
-	-	-	-	-
-	-	-	-	-
-	-	-	-	-
-	-	-	-	-
-	-	-	-	-
-	-	-	-	-
Eb	ix	Datum berichtigt	12.03.13	Ru
Ea	ix	Zeichnung ueberarbeitet nach AR-Gruppenstandard, Teil unveraendert, 04.03.13	Ru	
-	-	2xOberflaechenvariante hinzug., Oberflaechenvariante 000 (7422) enf.	-	-
Rev.	Anzahl/ quantity	Aenderungsbeschreibung / modification description	Datum/date	Name

**ARaymond**  
 A RAYMOND GmbH & Co.KG  
 Teichstrasse 57  
 Germany - 79511 Loerrach  
 Phone +49 (0) 7621 174-0  
 Fax +49 (0) 7621 174-225

Bei Verstaendnisproblemen beantragen Sie bitte beim Absender die deutsche Fassung vor jeder Anwendung.  
**"CONDITIONS OF USE"**  
 This drawing and all information (the "Drawing") disclosed are the exclusive property of A.Raymond.  
 By using this Drawing the Addressee acknowledges and accepts that this Drawing (1) is covered by A.Raymond' intellectual property rights or know-how and (2) is provided under the following conditions who represent a Deposit Agreement.  
 This Drawing is for Addressee' internal use only limited to its estimation.  
 Without prior written consent of A.Raymond, no permission or rights for any purpose, is hereby granted, such as, without any limitation, (1) the copy, in part or entirely, (2) and/or the presentation, in part or entirely, to any other third party outside the Addressee' company or in the company but with no interest (3) and/or the distribution of the Drawing, in part or entirely, in any medium (4) and/or the creation of any derivative work.  
 In case of breach of these conditions, Addressee shall indemnify A.Raymond from and against all damages (compensatory or consequential), costs, expenses and charges, caused or arising out of or attributable to its willful misconduct, fraud, negligence, infringement of A.Raymond' intellectual property rights. If the Addressee does not accept these conditions, please notify A.Raymond' sender immediately.

Intellectual property rights	vorbehalten / all rights reserved		Classification code	AABAD
Ersatz fuer/ substitute for	055639.C.01/Ad/10.12.2009	Entw.Ref./ dev.ref.	Projekt-Nr./ project no.	
Masstab/ scale	5:1	Allgemeintoleranz/ general tolerance	Datum/ date	04.03.2013
	A2	±0.5 / ±5°	Erstellt von/ prepared by	Ruzicka
Projektion / projection	ALL DIMENSIONS ARE IN MILLIMETERS		Freigegeben/ approved	20130313061048
	Blechkuecke/ met. thickness DIN EN 10140	0.50	Volumen/ volume (mm³)	118.4
			Gewicht/ weight (g)	1.0

Oberfl./  
 finish metallhaltige Korrosionsschutzbeschichtung, Farbe silver, GZ  
 metallic corrosion protection coated, colour silver, lubricated  
 Oberfl. Code/  
 finish code 4004

Werkstoffbehandl./  
 material treatment zwischenstufenverguetet / austempered  
 405 ... 505 HV 5

Werkstoff/  
 material C67S DIN EN 10132-4  
 Met. code 1000

Bezeichnung/  
 title Blechmutter  
 fuer Gewinde EN ISO 1478-ST4.2  
 sheet metal nut  
 for thread EN ISO 1478-ST4.2

Teil-Nr./  
 part no. 055639-0-15  
 Drawing type C:Customer

Kundenteile-Nr. / customer part no. -  
 Blatt / sheet 1 / 1  
 CAD system & version ProE WF4  
 Dateiname / filename 055639-0C00

⊗	055639-0-19	metallhaltige Korrosionsschutzbeschichtung, Farbe silver metallic corrosion protection coated, colour silver	5416
	055639-0-18	metallhaltige Korrosionsschutzbeschichtung, Farbe silver, GZ metallic corrosion protection coated, colour silver, lubricated	4050
	Teil-Nr. / part no.	Oberflaeche / Farbe / finish / colour	Oberfl. Code/ finish code
	Ausfuhrung / Execution		

**Référence**  
**055 639 007**  
**Acier Geomet 600h**  
**(CS-G500A)**

<http://www.cergy-vis.fr>  
**[CERGY-VIS]**  
 ET SI ON PARLAIT SERVICE