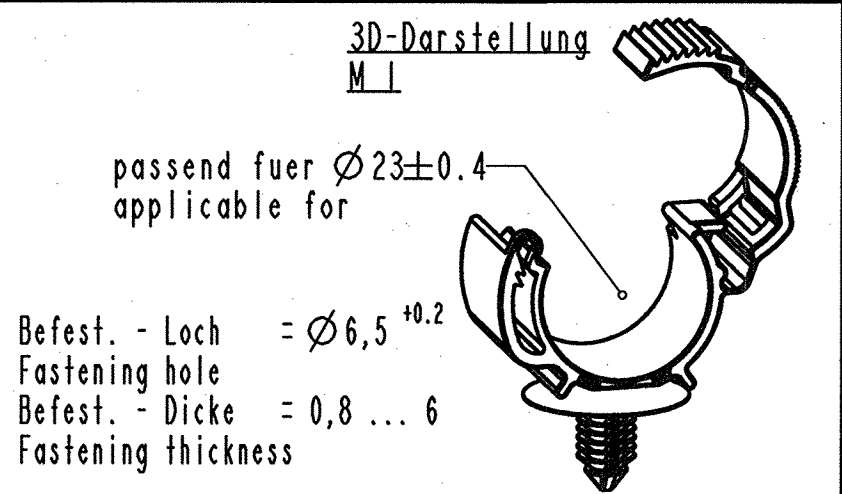
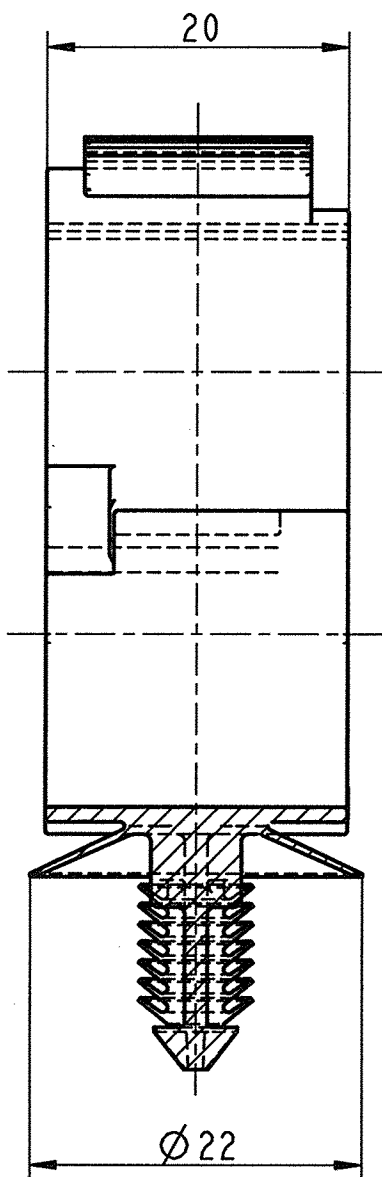
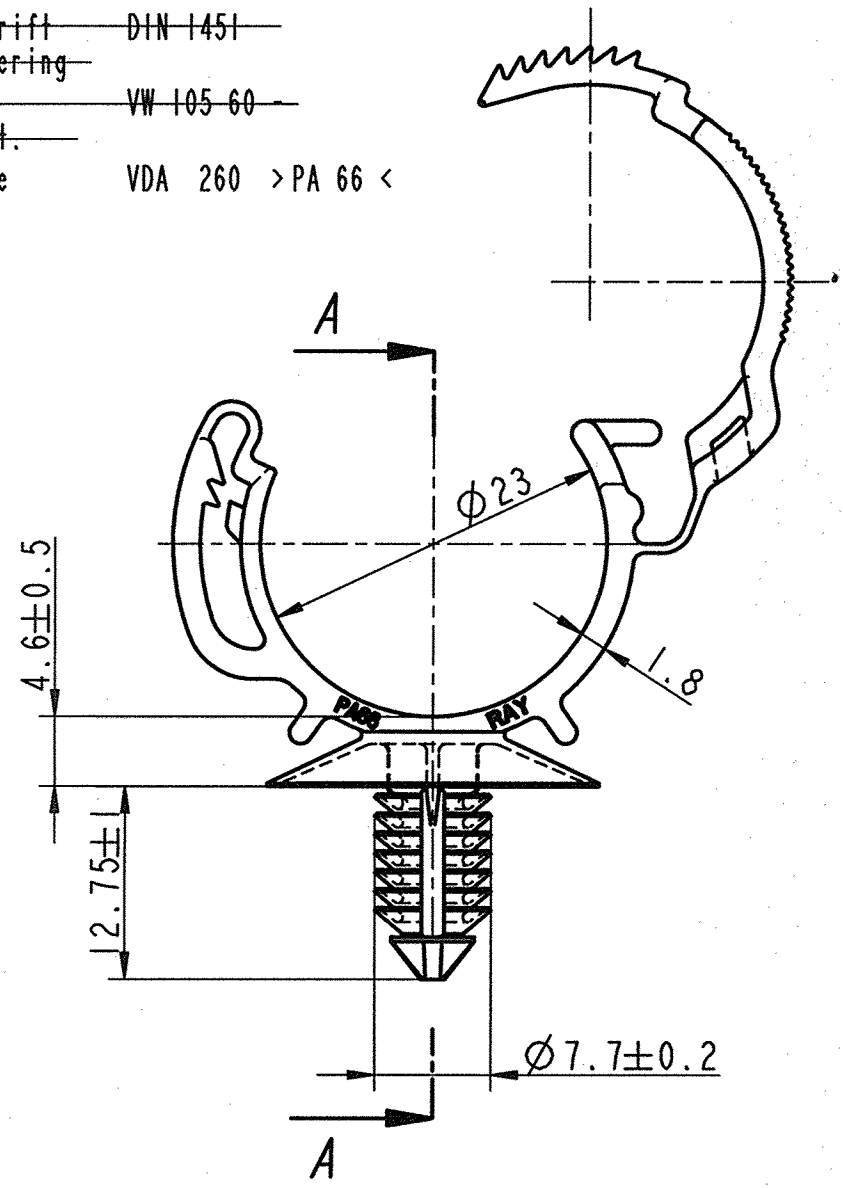


Kennzeichnung: / Identification:  
 Warenzeichen VW 105 14  
 Trademark  
 Herstellland VW 105 50  
 Country of origin  
 Hersteller - Code VW 105 40 - RAY  
 Mfr. - Code  
 Teil - Nr.; Schrift DIN 1451  
 Pl. - No.; Lettering  
 Datumsuhr VW 105 60  
 Date of manufact.  
 Werkstoff - Code VDA 260 > PA 66 <  
 Material - Code

**Schnitt/Section A-A**



-	-	-	-	-	-
-	-	-	-	-	-
-	-	-	-	-	-
Aa	Ix	VW-Nr. geaendert	02.12.09	Sp	So
lad.	kommt vor/ how often	Beschreibung / Description	Datum/Date	Name	

Aenderungen / Modifications

Format DIN A3  
 SPEZIALBEFESTIGUNGSSYSTEME WELTWEIT / ENGINEERED FASTENERS WORLDWIDE

Bei Verstaendnisproblemen beantragen Sie bitte beim Absender die deutsche Fassung vor jeder Anwendung.  
 "CONDITIONS OF USE"  
 This drawing and all information (the "Drawing") disclosed are the exclusive property of A-Raymond. By using this Drawing the Addressee acknowledge and accept that this Drawing (1) is covered by A-Raymond' intellectual property rights or know-how and (2) is provided under the following conditions who represent a Deposit Agreement. This Drawing is for Adressee' internal use only limited to its estimation. Without prior written consent of A-Raymond, no permission or rights for any purpose, is hereby granted, such as, without any limitation, (1) the copy, in part or entirely (2) and/or the presentation, in part or entirely, to any other third party outside the Addressee' company or in the company but with no interest (3) and/or the distribution of the Drawing, in part or entirely, in any medium (4) and/or the creation of any derivative work. In case of breach of these conditions, Addressee shall indemnify A-Raymond from and against all damages (compensatory or consequential), costs, expenses and charges, caused or arising out of or attributable to its willful misconduct, fraud, negligence, infringement of A-Raymond' Intellectual Property rights. If the Addressee does not accept these conditions, please notify A-Raymond' sender immediately.

Dateiname/ Filename	CAD-PE: 204496_C_01				
Ersatz fuer/ Substitute for	49869-EK vom 12.02.2005	Proj.-Nr./ Proj.-No.	49869-K	RASCH- Code	BADA-
		Vol.(mm <sup>3</sup> )	-	Gewicht/ Weight (g)	-

Schutzrechte/  
Patent rights vorbehalten / all rights reserved

Gepr./ App.	F.-gepr./ Produktion	Q.-gepr./ Quality	S.-gepr./ Patent app.
----------------	-------------------------	----------------------	--------------------------

Maassstab / Scale	Allgem.Tol. wenn nicht anders angegeben/ General tol. unless otherwise specified	Datum/ Date	08.03.2005
M 2:1	siehe Tabelle / see table	Gez./ Drawn	Vollmer

Oberflaechenbehandlg./ Finish	-	Kennzahl/ Code number	-
----------------------------------	---	--------------------------	---

Werkstoffbehandlg./ Material treatment	-	Blechedicke/ Mat.Thickn. DIN EN 10 140	-
---	---	--	---

Werkstoff/ Material	PA 66 wstab. tr. schlagzaeh	Mat.-Code	2000
------------------------	-----------------------------	-----------	------

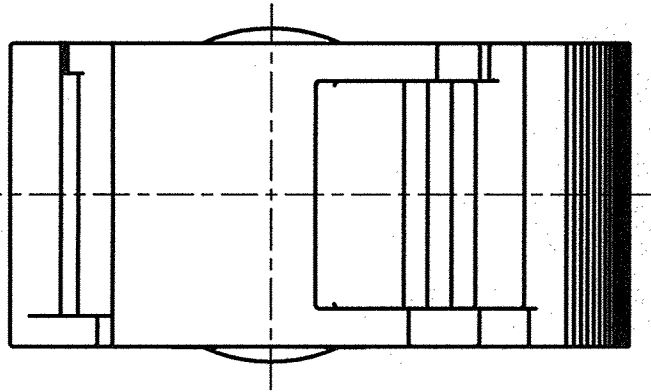
Benennung/  
Partname

**Schlauchhalter**  
hose clip

Teil-Nr./ Part-No.	<b>204496 000</b>	C
	VW-Nr. WHT 005 377	

>400 <= 1000	±2
>120 <= 400	±1.5
> 30 <= 120	±1
> 6 <= 30	±0.5
<= 6	±0.25
Winkel / Angle	±3°

Allgemeintoleranzen fuer  
Nennmaesse ohne Toleranz.  
General tolerances for  
nominal dimensions without  
specified tolerance.



im Auswerferbereich keine Radien  
no radii in the area of ejector

Nicht bemaßte Geometrien  
sind dem Datensatz zu entnehmen.  
Undimensioned design models to be  
taken from the data record.

endgueltige Toleranzfestlegung  
nach Erprobung der Serienteile  
final definition of tolerances  
after testing the sserial parts

204496 000	schwarz black	SW	7000
Teil-Nr. / Part-No.	Oberflaeche / Farbe / Finish / colour	Kennzahl/ Code number	
	Ausfuhrung / Execution		