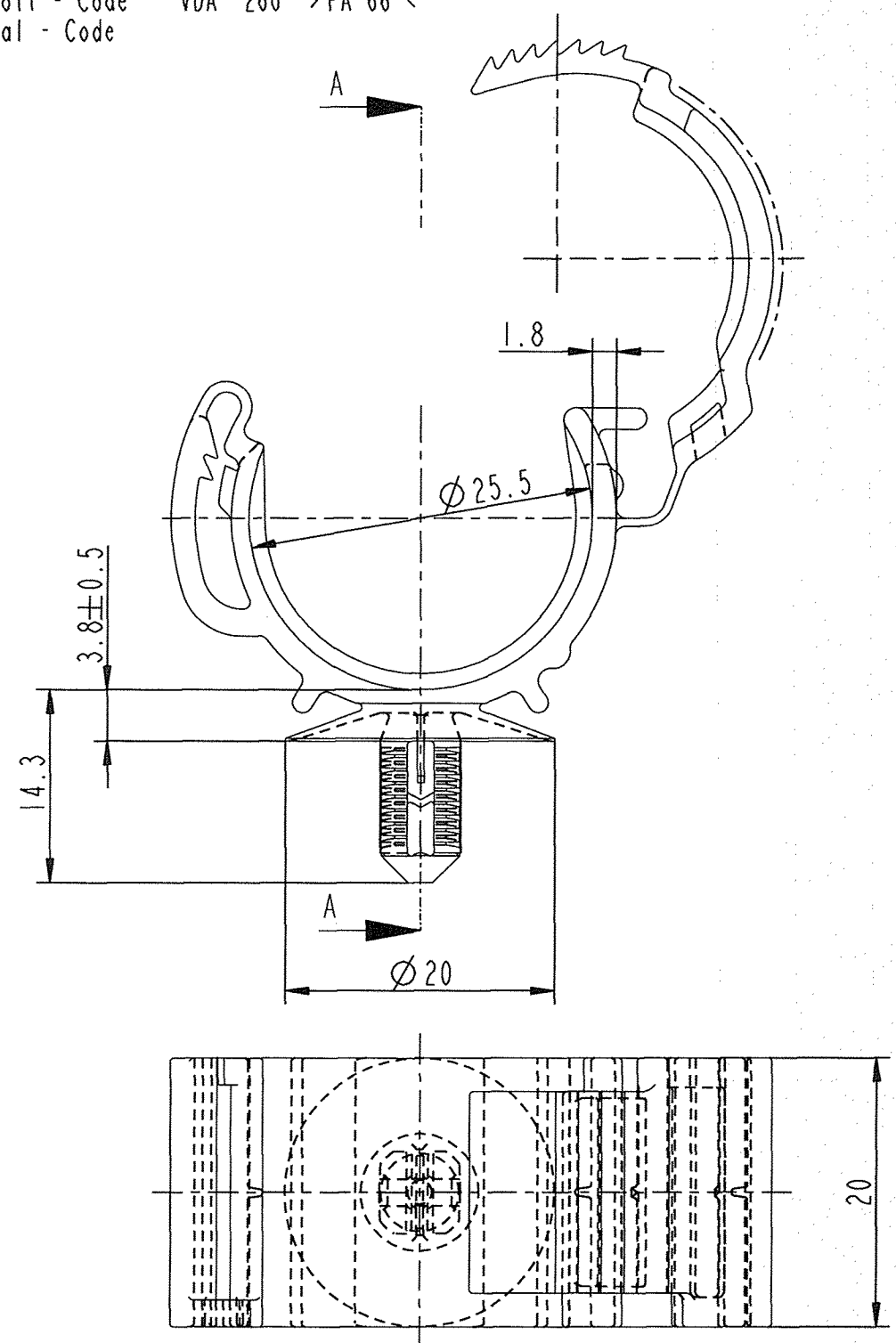
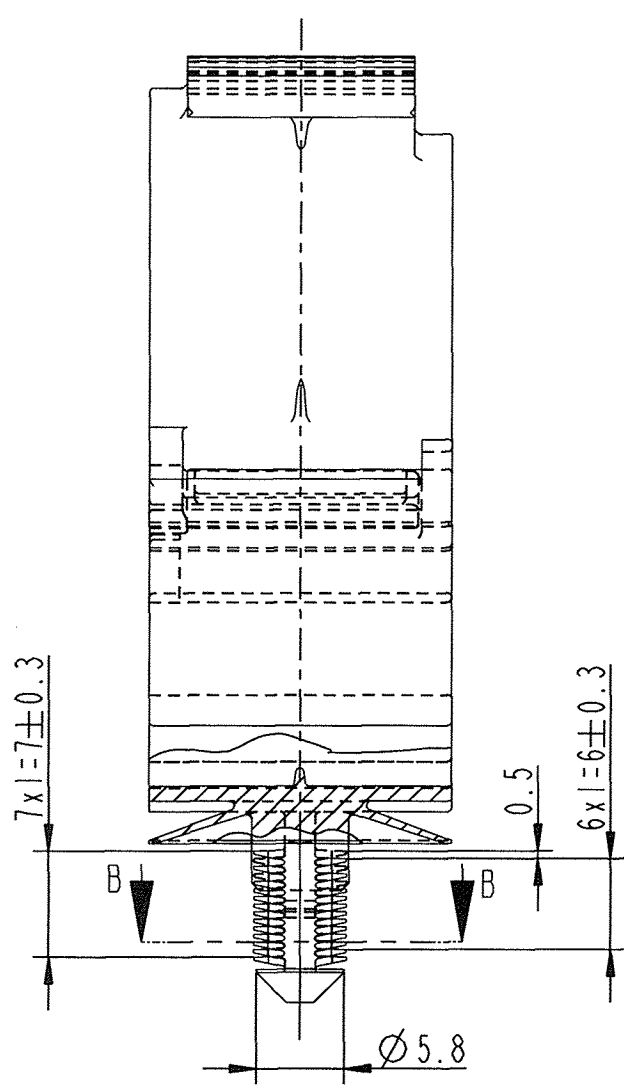


Kennzeichnung: / Identification:

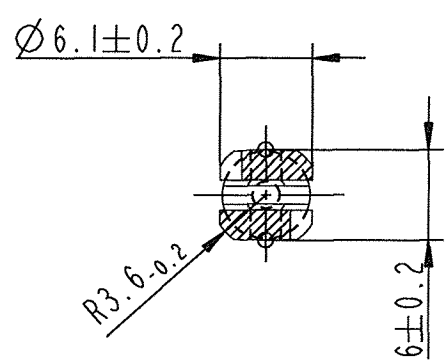
Hersteller - Code RAY
 Mfr. - Code
 Werkstoff - Code VDA 260 > PA 66 <
 Material - Code



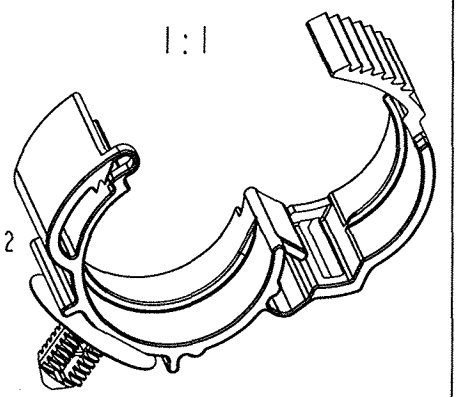
Schnitt/section A-A



Schnitt/section B-B



Im Anlieferungszustand geöffnet
 open when delivered



Befest. - Loch = $\varnothing 6,5^{+0.2}$
 Fastening hole
 Befest. - Dicke = 1 ... 6
 Fastening thickness

-	-	-	-	-
-	-	-	-	-
-	-	-	-	-
-	-	-	-	-
-	-	-	-	-
Ao	-	Indexreform SAP / keine Teileänderung	18.08.08	kl
Ind.	kommt vor / how often	Beschreibung / Description	Datum/Date	Name

Änderungen / Modifications

Format DIN A3
 SPEZIALBEFESTIGUNGSSYSTEME WELTWEIT / ENGINEERED FASTENERS WORLDWIDE

Bei Verständnisproblemen beantragen Sie bitte beim Absender die deutsche Fassung vor jeder Anwendung.
 "CONDITIONS OF USE"
 This drawing and all information (the "Drawing") disclosed are the exclusive property of A.Raymond. By using this Drawing the Addressee acknowledges and accepts that this Drawing (1) is covered by A.Raymond's intellectual property rights or know-how and (2) is provided under the following conditions who represent a Deposit Agreement. This Drawing is for Addressee's internal use only limited to its estimation. Without prior written consent of A.Raymond, no permission or rights for any purpose, is hereby granted, such as, without any limitation, (1) the copy, in part or entirety (2) and/or the presentation, in part or entirety, to any other third party outside the Addressee's company or in the company but with no interest (3) and/or the distribution of the Drawing, in part or entirety, in any medium (4) and/or the creation of any derivative work. In case of breach of these conditions, Addressee shall indemnify A.Raymond from and against all damages (compensatory or consequential), costs, expenses and charges, caused or arising out of or attributable to its willful misconduct, fraud, negligence, infringement of A.Raymond's Intellectual Property rights. If the Addressee does not accept these conditions, please notify A.Raymond's sender immediately.

Dateiname/ Filename	CAD-PE: 019778.C_01				
Ersatz fuer/ Substitute for	19 778.567 vom 21.11.2000	Proj.-Nr./ Proj.-No.	15162-K	RASCH-Code	BADA-
		Vol.(mm ³)	4860	Gewicht/ Weight (g)	5.39

Schutzrechte/ Patent rights	DBP 62			
Gepr./ App.	F	F.-gepr./ Produktion	Q.-gepr./ Quality	S.-gepr./ Patent app.

Maßstab / Scale	2:1	Allgem.Tol. wenn nicht anders angegeben/ General tol. unless otherwise specified	siehe Tabelle / see table	Datum/ Date	18.08.2008
				Gez./ Drawn	Klar / Sp

Oberflächenbehandlg./ Finish	-	Kennzahl/ Code number	-
------------------------------	---	-----------------------	---

Werkstoffbehandlg./ Material treatment	-	Blechkicke/ Mat. Thickn. DIN EN 10 140	-
--	---	--	---

Werkstoff/ Material	PA 66 - wstab. tr.schlagzäh - heat stabilized, dry impact strength	Mat.-Code	2000
---------------------	--	-----------	------

Benennung/ Partname	Wellenschlauchclip corrugated hose clip		
---------------------	---	--	--

Teil-Nr./ Part-No.	019778 000		C
--------------------	------------	--	---

>400 <= 1000	±2
>120 <= 400	±1.5
> 30 <= 120	±1
> 6 <= 30	±0.5
<= 6	±0.25
Winkel / Angle	±3°
Allgemeintoleranzen fuer Nennmaße ohne Toleranz. General tolerances for nominal dimensions without specified tolerance.	

passend für / suitable for

Wellenschlauchgröße corrugated hose size	Außen-Ø outside-Ø
22	25.5±0.4

im Auswerferbereich keine Radien
 no radii in the area of ejector

019778 000	schwarz black	SW	7000
Teil-Nr. / Part-No.	Oberfläche / Farbe / Finish / colour	Kennzahl/ Code number	
	Ausführung / Execution		