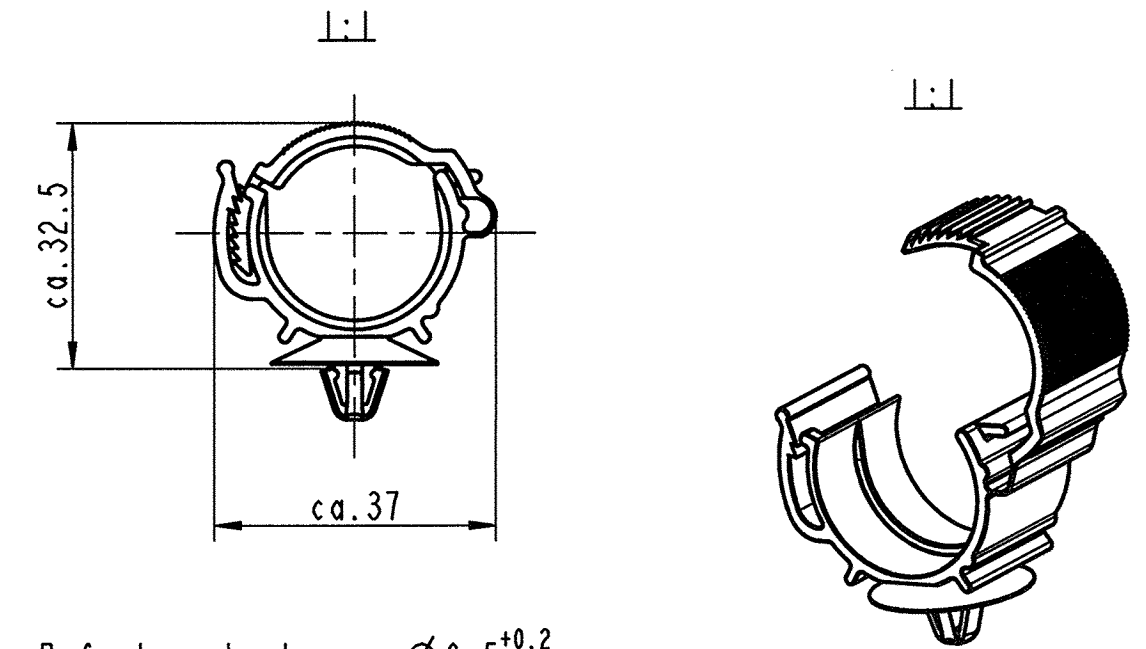
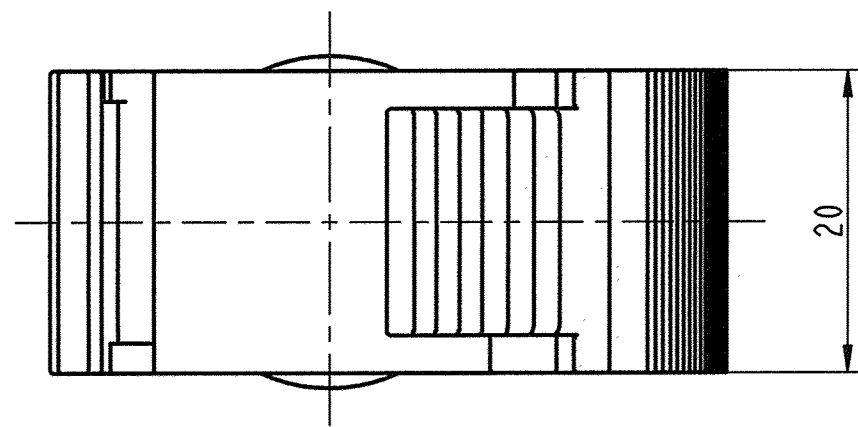


Ansicht / View X



Befest. - Loch = $\text{Ø}6,5^{+0.2}$
 Fastening hole
 Befest. - Dicke = 0,8...2,5
 Fastening thickness

| passend fuer / suitable for | | |
|----------------------------------------------|-----------------------|--------------------------------------------------|
| Wellenschlauchgrosse corrugated hose size | Aussen Ø outside Ø | VW - Normteil-Nr. VW - standard component-No. |
| 22 | 25.5±0.4 | N 906 686.01 |

| Id. | Umsatz wert / low offer | Beschreibung / Description | Datum/Date | Name |
|-----|-------------------------|------------------------------------|------------|------|
| Ea | - | Indexreform / keine Teileaenderung | 11.11.08 | Jo |

Aenderungen / Modifications

Format DIN A2

Bei Verstaendnisproblemen beantragen Sie bitte beim Absender die deutsche Fassung vor jeder Anwendung.
 "CONDITIONS OF USE"
 This drawing and all information (the "Drawing") disclosed are the exclusive property of A.Raymond. By using this Drawing the Addressee acknowledges and accepts that this Drawing (D) is covered by A.Raymond's intellectual property rights or know-how and (2) is provided under the following conditions who represent a Deposit Agreement. This Drawing is for Addressee' internal use only limited to its estimation. Without prior written consent of A.Raymond, no permission or rights for any purpose, is hereby granted, such as, without any limitation, (1) the copy, in part or entirely (2) and/or the presentation, in part or entirely, to any other third party outside the Addressee' company or in the company but with no interest (3) and/or the distribution of the Drawing, in part or entirely, in any medium (4) and/or the creation of any derivative work. In case of breach of these conditions, Addressee shall indemnify A.Raymond from and against all damages (consequential or consequential), costs, expenses and charges, caused or arising out of or attributable to its willful misconduct, fraud, negligence, infringement of A.Raymond' intellectual Property rights. If the Addressee does not accept these conditions, please notify A.Raymond' sender immediately.

| | | | |
|--------------------------------|------------------------------------|-------------------------|---------|
| Teilname/ Filename | CAD-PE: 017529_C.01 | | |
| Ersatz fuer/ Substitute for | 17 529 567 Index 4 vom 09.12.99 | Proj.-Nr./ Proj.-No. | 31734-K |
| | | RASCH- Code | BADA- |
| | | Vol.(mm³) | 4967 |
| | | Gewicht/ Weight (g) | 5.46 |

Schutzrechte/
Patent rights vorbehalten / all rights reserved

| | | | |
|----------------|-------------------------|----------------------|--------------------------|
| Gepr./ App. | F.-gepr./ Produktion | Q.-gepr./ Quality | S.-gepr./ Patent app. |
| | | | |

| | | | |
|-----------------|-------------------------------------------------------------------------------------|----------------|------------|
| Maßstab / Scale | Allgem.Tol. wenn nicht anders angegeben/ General tol. unless otherwise specified | Datum/ Date | 11.11.2008 |
| 2:1 | siehe Tabelle / see table | Gez./ Drawn | John |

| | | | |
|----------------------------------|---|--------------------------|---|
| Oberflaechenbehandlg./ Finish | - | Kennzahl/ Code number | - |
|----------------------------------|---|--------------------------|---|

| | | | |
|-------------------------------------------|---|----------------------------------------------|---|
| Werkstoffbehandlg./ Material treatment | - | Bleedichte/ Met. thickn. DIN EN 10 140 | - |
|-------------------------------------------|---|----------------------------------------------|---|

| | | | |
|------------------------|-----------------------------------------------------------|-----------|------|
| Werkstoff/ Material | PA66 wstab. tr.schlagzaeh heat stab. dry imp. strength | Met.-Code | 2000 |
|------------------------|-----------------------------------------------------------|-----------|------|

Benennung/
Partname
Wellenschlauchclip
Corrugated hose clip

| | | |
|-----------------------|------------|---|
| Teil-Nr./ Part-No. | 017529 000 | C |
|-----------------------|------------|---|

| | |
|----------------|-------|
| >400 <= 1000 | ±2 |
| >120 <= 400 | ±1.5 |
| > 30 <= 120 | ±1 |
| > 6 <= 30 | ±0.5 |
| <= 6 | ±0.25 |
| Winkel / Angle | ±3° |

Kennzeichnung: / Identification:
 Hersteller VW 105 40 - RAY
 Mfr. - Code
 Werkstoff - Code VDA 260 > PA 66 <
 Material - Code

endgueltige Toleranzfestlegung nach Erprobung der Serienteile
 final definition of tolerances after testing the serial parts

| | | | |
|------------------------|-------------------------------------------|---------------------------|------|
| 017529 000 | schwarz black | SW | 7000 |
| Teil-Nr. / Part-No. | Oberflaechen / Farbe / Finish / colour | Kennzahl / Code number | |
| | Ausfuhrung / Execution | | |