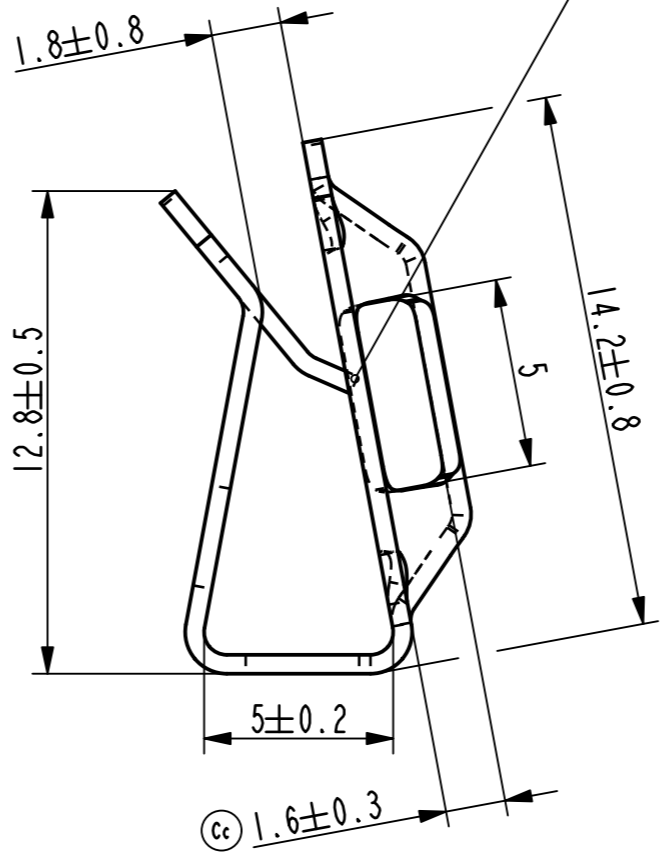
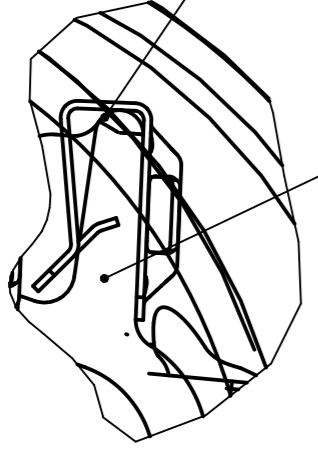


Kralle im Gegenschkel zulaessig / claw overlapping permissible

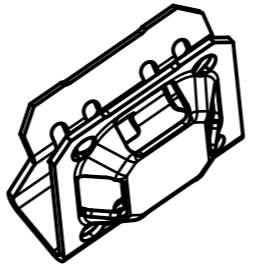


Cb Bei zunehmender Befestigungsdicke muessen Radien oder Fasen angebracht werden / With increasing fastening thickness chamfers or radii have to be added



Einbausituation / assembly situation 2:1

Cb Befestigungsdicke 1.5...4.0 / fastening thickness 1.5...4.0



Isometrische Ansicht / isometric view 2:1

Vor Auslegung einer automatisierten Verarbeitung des Teils sollte Ruecksprache mit Fa. ARaymond gehalten werden.
 Fully automatic processing of the part requires prior consultation with ARaymond.

-	-	-	-	-
-	-	-	-	-
-	-	-	-	-
-	-	-	-	-
-	-	-	-	-
-	-	-	-	-
-	-	-	-	-

Cc	1x	Mass 1.6±0.3 war 1.5 (an Ist-Zustand angepasst)	25.07.12	toH
Cb	2x	Notiz hinzugefuegt	18.04.12	toH
Ca	-	Zurueckgesetzt auf alten Indexstand, Indexstand Ba wurde nie umgesetzt	13.10.11	toH
Rev.	Anzahl/quantity	Aenderungsbeschreibung / modification description	Datum/date	Name



Teichstrasse 57
 Germany - 79511 Loerrach
 Phone +49 (0) 7621 174-0
 Fax +49 (0) 7621 174-225

Bei Verstaendnisproblemen beantragen Sie bitte beim Absender die deutsche Fassung vor jeder Anwendung.
 "CONDITIONS OF USE"
 This drawing and all information (the "Drawing") disclosed are the exclusive property of ARaymond. By using this Drawing the Addressee acknowledges and accepts that this Drawing (1) is covered by ARaymond' intellectual property rights or know-how and (2) is provided under the following conditions who represent a Deposit Agreement. This Drawing is for Addressee' internal use only limited to its estimation. Without prior written consent of ARaymond, no permission or rights for any purpose, is hereby granted, such as, without any limitation, (1) the copy, in part or entirely, (2) and/or the presentation, in part or entirely, to any other third party outside the Addressee' company or in the company but with no interest (3) and/or the distribution of the Drawing, in part or entirely, in any medium (4) and/or the creation of any derivative work. In case of breach of these conditions, Addressee shall indemnify ARaymond from and against all damages (compensatory or consequential), costs, expenses and charges, caused or arising out of or attributable to its willful misconduct, fraud, negligence, infringement of ARaymond' intellectual property rights. If the Addressee does not accept these conditions, please notify ARaymond' sender immediately.

Intellectual property rights	vorbehalten / all rights reserved		Classification code	YO---
Ersatz fuer/substitute for	208738_C_01/Ba/28.01.09	Entw.Ref./dev.ref.	Projekt-Nr./project no.	50852
Maassstab/scale	Format	Allgemeintoleranz/general tolerance	Datum/date	13.10.2011
		±0.3 / ±5°	Erstellt von/prepared by	T.Hess
Projektion / projection	ALL DIMENSIONS ARE IN MILLIMETERS	Freigegeben/approved	20120727133946	
	Bleedicke/mat. thickness DIN EN 10140	0.50	Volumen/volume (mm³)	186.7
			Gewicht/weight (g)	1.5

Oberfl./finish metallhaltige Korrosionsschutzbeschichtung, Farbe silber, GZ
 metallic corrosion protection coated, colour silver, lubricated
 Oberfl. Code/finish code 4001

Werkstoffbehandl./material treatment zwischenstufenverguetet / austempered
 435 ... 535 HV 5

Werkstoff/material C67S DIN EN 10132-4
 Mat. code 1000

Benennung/title U-Klammer
 edge clip

Teil-Nr./part no. 208738-0-01
 Drawing type C:Customer

Kundenteile-Nr. / customer part no. -
 Blatt / sheet 1 / 1
 CAD system & version ProE WF4
 Dateiname / filename 208738-0C00

-	-	-
Teil-Nr. / part no.	Oberflaeche / Farbe / finish / colour	Oberfl. Code/ finish code
Ausfuehrung / Execution		