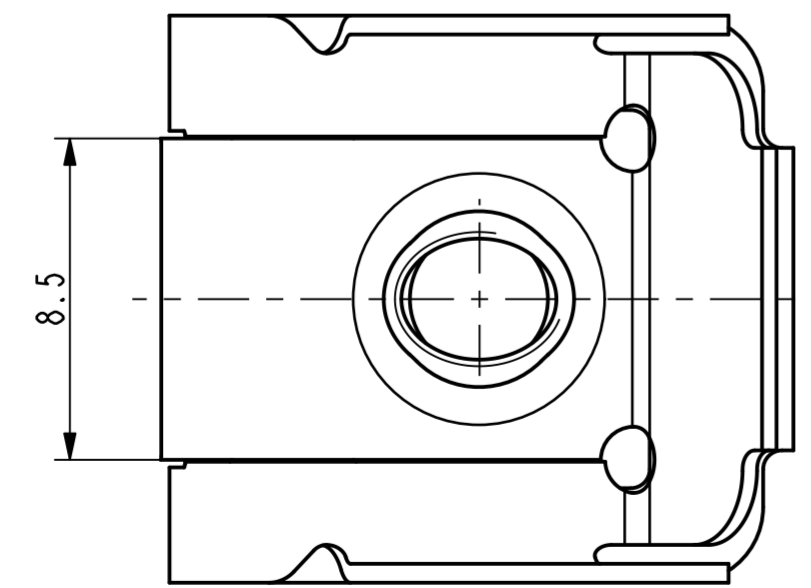
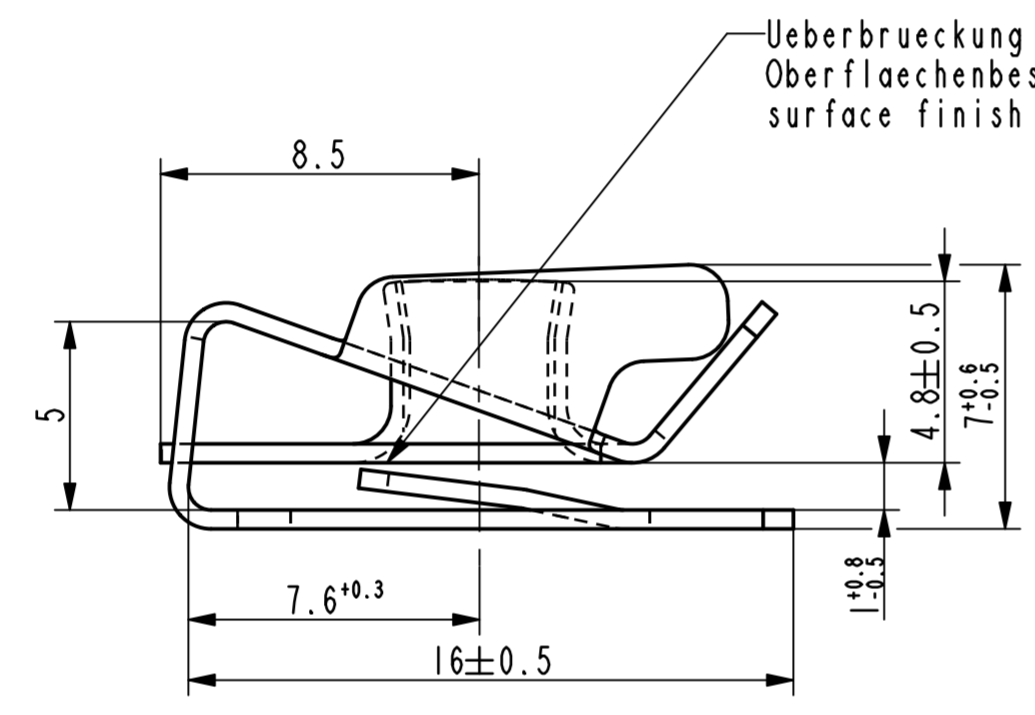
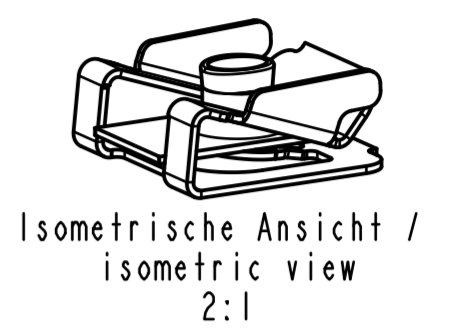
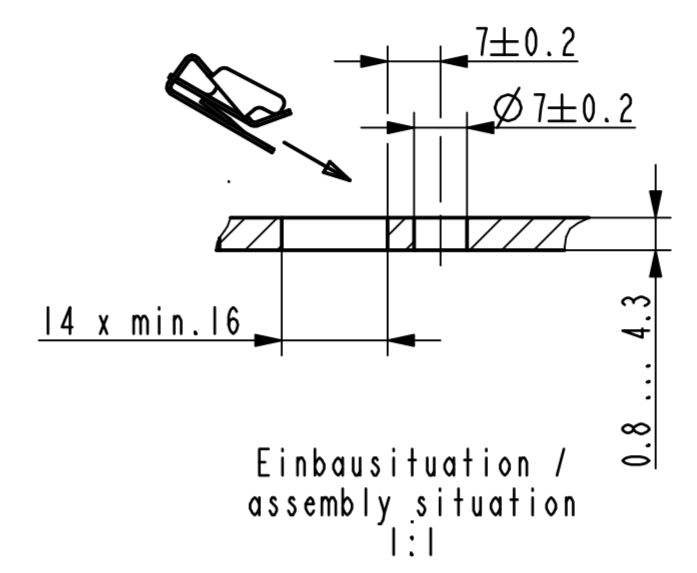


Gewindedurchzug kann nur auf 2 Gaenge mit lehrenhaltiger M4 Schraube geprueft werden / the thread strength can only be tested on 2 turns with a calibrated M4 screw gauge

Schwergaengigkeit des Gewindes durch Oberflaechenbeschichtung zulaessig / slow thread engagement caused by the surface finish permissible



<http://www.cergy-vis.fr>

[CERGY-VIS]

ET SI ON PARLAIT SERVICE

Vor Auslegung einer automatisierten Verarbeitung des Teils sollte Ruecksprache mit Fa. ARaymond gehalten werden. Fully automatic processing of the part requires prior consultation with ARaymond.

Bc	lx	Oberflaechenvariante hinzugefuegt u. entfernt (3000)	30.11.11	mj
Rev.	Anzahl/quality	Aenderungsbeschreibung / modification description	Datum/date	Name

ARaymond
A RAYMOND GmbH & Co.KG
Teichstrasse 57
Germany - 79511 Loerrach
Phone +49 (0) 7621 174-0
Fax +49 (0) 7621 174-225

Bei Verstaendnisproblemen beantragen Sie bitte beim Absender die deutsche Fassung vor jeder Anwendung.
"CONDITIONS OF USE"
This drawing and all information (the "Drawing") disclosed are the exclusive property of ARaymond. By using this Drawing the Addressee acknowledges and accepts that this Drawing (1) is covered by ARaymond's Intellectual property rights or know-how and (2) is provided under the following conditions who represent a Deposit Agreement. This Drawing is for Addressee's internal use only limited to its estimation. Without prior written consent of ARaymond, no permission or rights for any purpose, is hereby granted, such as, without any limitation, (1) the copy, in part or entirely, (2) and/or the presentation, in part or entirely, to any other third party outside the Addressee's company or in the company but with no interest (3) and/or the distribution of the Drawing, in part or entirely, in any medium (4) and/or the creation of any derivative work. In case of breach of these conditions, Addressee shall indemnify ARaymond from and against all damages (compensatory or consequential), costs, expenses and charges, caused or arising out of or attributable to its willful misconduct, fraud, negligence, infringement of ARaymond's Intellectual property rights. If the Addressee does not accept these conditions, please notify ARaymond immediately.

Intellectual property rights	vorbehalten / all rights reserved		Classification code	AABCA	
Ersatz fuer/ substitute for	015371.c.01/Bb/24.06.2008	Entw.Ref./ dev.ref.	Projekt-Nr./ project no.		
Masstab/ scale	5:1	Allgemeintoleranz/ general tolerance	±0.3		
Format	A2	Datum/ date	30.11.2011		
Erstellt von/ prepared by	M. Junge				
Freigegeben/ approved	20111130095910				
Blechkraefte/ met. thickness DIN EN 10140	0.50	Volumen/ volume (mm³)	254.1	Gewicht/ weight (g)	2.0

Oberfl./ finish phosphatiert / phosphated
Oberfl. Code/ finish code 5000

Werkstoffbehandl./ material treatment zwischenstufenverguetet / austempered 365 ... 465 HV 5

Werkstoff/ material C45E DIN EN 10132-3
Met. code 1040

Bezeichnung/ title **Mehrbereichssteckmutter fuer Gewinde M4, selbstsichernd sheet metal nut for thread M4, selflocked**

Teil-Nr./ part no. 015371-0-02
Drawing type C:Customer

015371-0-08	metallhaltige Korrosionsschutzbeschichtung, Farbe silber, GZ metallic corrosion protection coated, colour silver, lubricated	4001
015371-0-07	metallhaltige Korrosionsschutzbeschichtung, Farbe silber metallic corrosion protection coated, colour silver	5412
015371-0-06	metallhaltige Korrosionsschutzbeschichtung, Farbe schwarz, GZ metallic corrosion protection coated, colour black, lubricated	5453
015371-0-05	metallhaltige Korrosionsschutzbeschichtung, Farbe silber metallic corrosion protection coated, colour silver	5416
015371-0-04	impraegniert oiled	7000
015371-0-03	metallhaltige Korrosionsschutzbeschichtung, Farbe silber metallic corrosion protection coated, colour silver	5410

Teil-Nr. / part no.	Oberflaechen / Farbe / finish / colour	Oberfl. Code/ finish code
Ausfuhrung / Execution		
Kundenteile-Nr. / customer part no.	-	Blatt / sheet 1 / 1
CAD system & version	ProE WF4	Dateiname / filename 015371-0C00