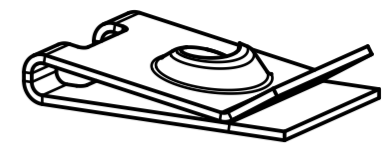
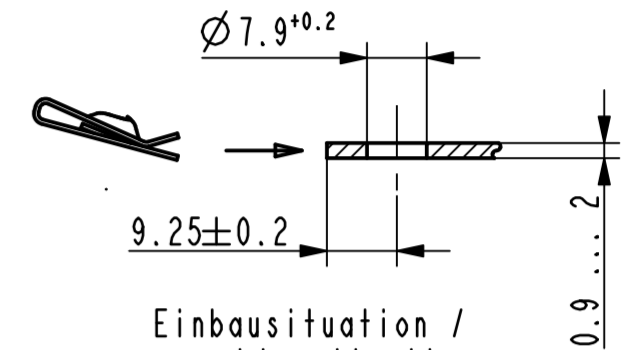


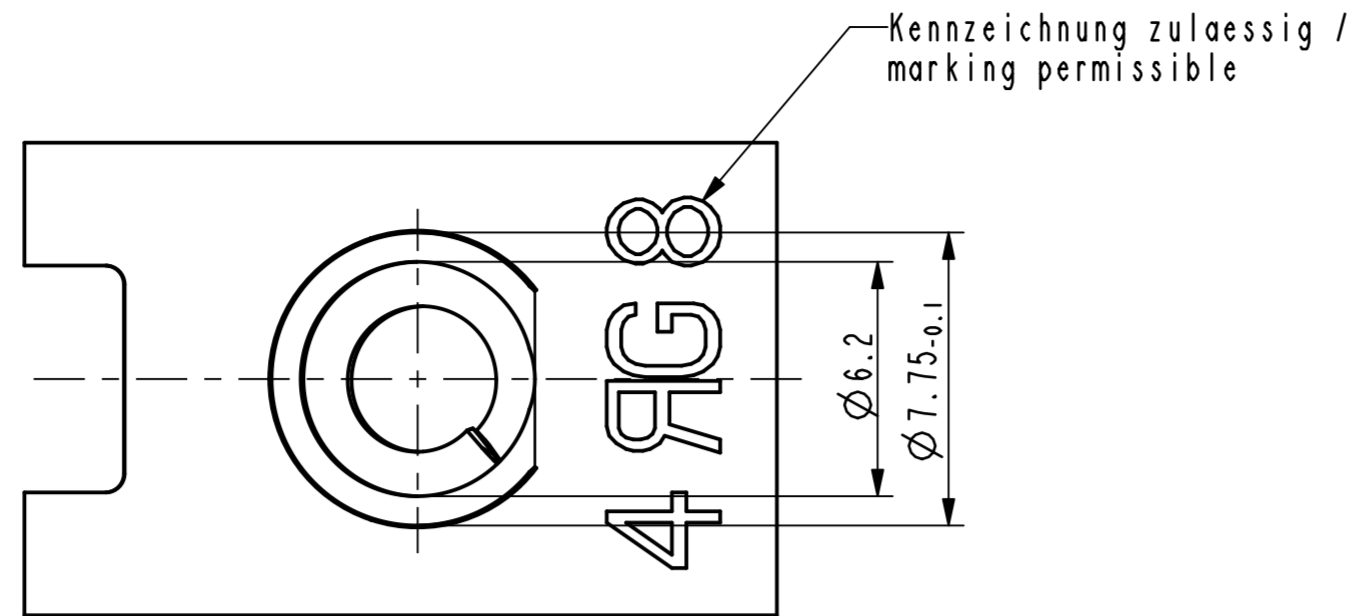
Vor Auslegung einer automatisierten Verarbeitung des Teils sollte Rücksprache mit Fa. A.Raymond gehalten werden.
Fully automatic processing of the part requires prior consultation with A.Raymond GmbH.



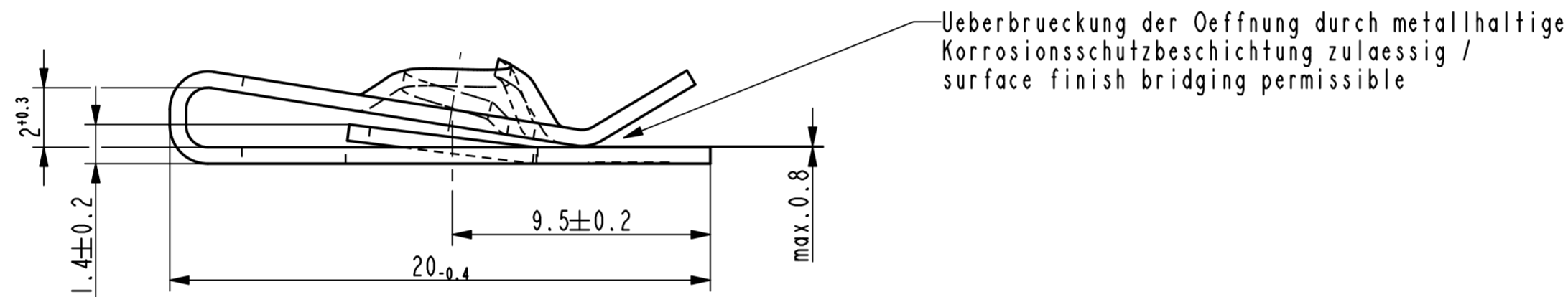
Isometrische Ansicht /
isometric view
2:1



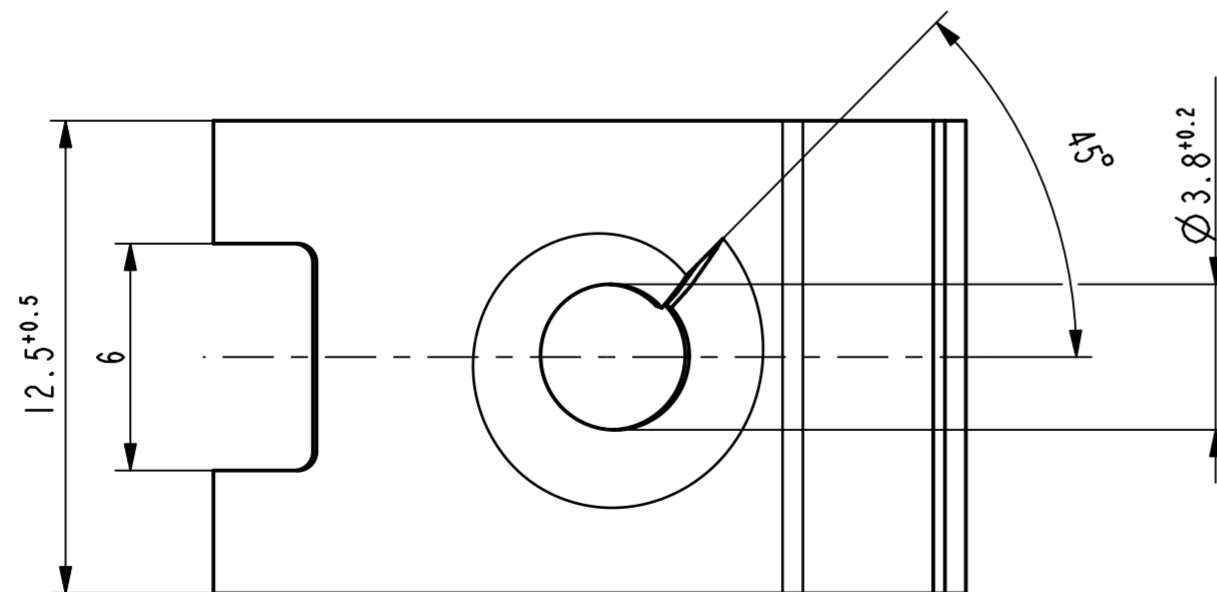
Einbausituation /
assembly situation
1:1



Kennzeichnung zulaessig /
marking permissible



Ueberbrueckung der Oeffnung durch metallhaltige
Korrosionsschutzbeschichtung zulaessig /
surface finish bridging permissible



Bd	012517-0-10	impraegniert oiled	7000
Be	012517-0-09	metallhaltige Korrosionsschutzbeschichtung, Farbe silber metallic corrosion protection coated, colour silver	4052
	012517-0-08	metallhaltige Korrosionsschutzbeschichtung, Farbe silber, GZ metallic corrosion protection coated, colour silver, lubricated	4000
	012517-0-07	metallhaltige Korrosionsschutzbeschichtung, Farbe silber metallic corrosion protection coated, colour silver	5410
	012517-0-06	verzinkt / passiviert farblos zinc plated / passivated colourless	3250
	012517-0-05	metallhaltige Korrosionsschutzbeschichtung, Farbe schwarz metallic corrosion protection coated, colour black	5451
	012517-0-03	phosphatiert / lackiert, Farbe schwarz (nicht deckend) phosphated / varnished, colour clear black	5300
	Teil-Nr. / part no.	Oberflaeche / Farbe / finish / colour	Oberfl. Code / finish code

-	-	-	-	-
-	-	-	-	-
-	-	-	-	-
-	-	-	-	-
-	-	-	-	-
-	-	-	-	-
-	-	-	-	-
-	-	-	-	-
Be	ix	Oberflaechenvariante hinzuefuegt	08.07.11	mj
Bd	ix	Oberflaechenvariante hinzuefuegt	28.06.11	Ru
Bc	-	Oberflaechenvariante entfernt (3000)	21.02.11	mj
Rev.	Anzahl/ quantity	Aenderungsbearbeitung / modification description	Datum/date	Name

ARaymond
A RAYMOND GmbH & Co.KG
Teichstrasse 57
Germany - 79511 Loerrach
Phone +49 (0) 7621 174-0
Fax +49 (0) 7621 174-225

Bei Verstaendnisproblemen beantragen Sie bitte beim Absender die deutsche Fassung vor jeder Anwendung.
"CONDITIONS OF USE"
This drawing and all information (the "Drawing") disclosed are the exclusive property of A.Raymond.
By using this Drawing the Addressee acknowledges and accepts that this Drawing
(1) is covered by A.Raymond' intellectual property rights or know-how and
(2) is provided under the following conditions who represent a Deposit Agreement.
This Drawing is for Addressee' internal use only limited to its estimation.
Without prior written consent of A.Raymond, no permission or rights for any purpose, is hereby granted, such as, without any limitation,
(1) the copy, in part or entirely
(2) and/or the presentation, in part or entirely, to any other third party outside the Addressee' company or in the company but with no interest
(3) and/or the distribution of the Drawing, in part or entirely, in any medium
(4) and/or the creation of any derivative work.
In case of breach of these conditions, Addressee shall indemnify A.Raymond from and against all damages (compensatory or consequential),
costs, expenses and charges, caused or arising out of or attributable to its willful misconduct, fraud, negligence, infringement of
A.Raymond' intellectual property rights. If the Addressee does not accept these conditions, please notify A.Raymond' sender immediately.

Intellectual property rights	vorbehalten / all rights reserved		Classification code	AABAE
Ersatz fuer/ substitute for	012517.c.01/Bb/21.09.2006	Entw.Ref./ dev.ref.	Projekt-Nr./ project no.	54712-EM
Masstab/ scale	5:1	Allgemeintoleranz/ general tolerance	Datum/ date	21.02.2011
Format	A2	Erstellt von/ prepared by	M. Junge	
Projektion / projection	ALL DIMENSIONS ARE IN MILLIMETERS	Freigegeben/ approved	20110708073516	
Blechkoeefizienz/ sheet metal efficiency DIN EN 10140	0.60	Volumen/ volume (mm³)	263.8	Gewicht/ weight (g)
				2.1

Oberfl. /
finish
phosphatiert / impraegniert
phosphated / oiled
Oberfl. Code/
finish code
5100

Werkstoffbehandl./
material treatment
zwischenstufenverguetet / austempered
435 ... 535 HV 5

Werkstoff/
material
C67S DIN EN 10132-4
Mat. code
1000

Bezeichnung/
title
Blechmutter
fuer Gewinde EN ISO 1478 - ST4.8
sheet metal nut
for thread EN ISO 1478 - ST4.8

Teil-Nr. /
part no.
012517-0-02
Drawing type
C:Customer

Kundenteile-Nr. / customer part no.
-
Blatt / sheet
1 / 1

CAD system & version
ProE WF4
Dateiname / filename
012517-0C00

Ausfuhrung / Execution