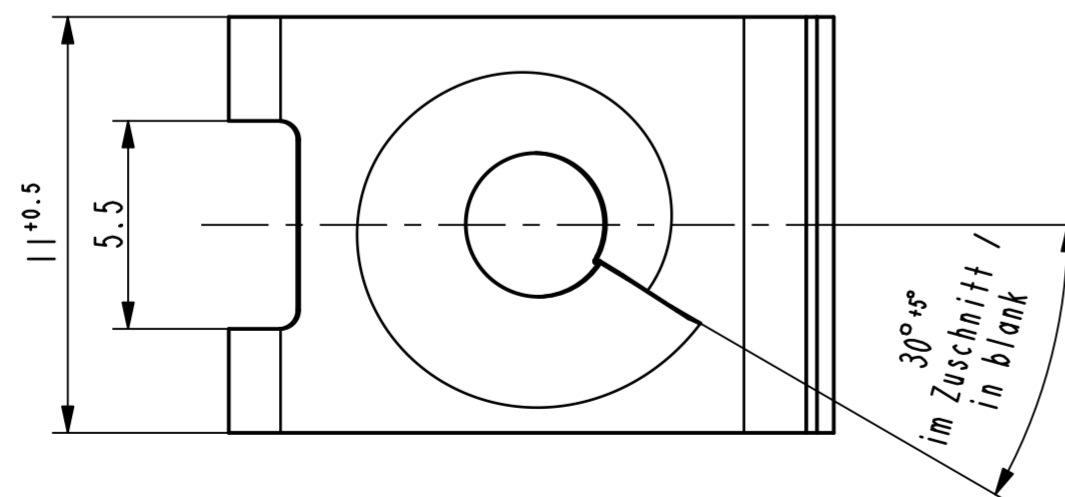
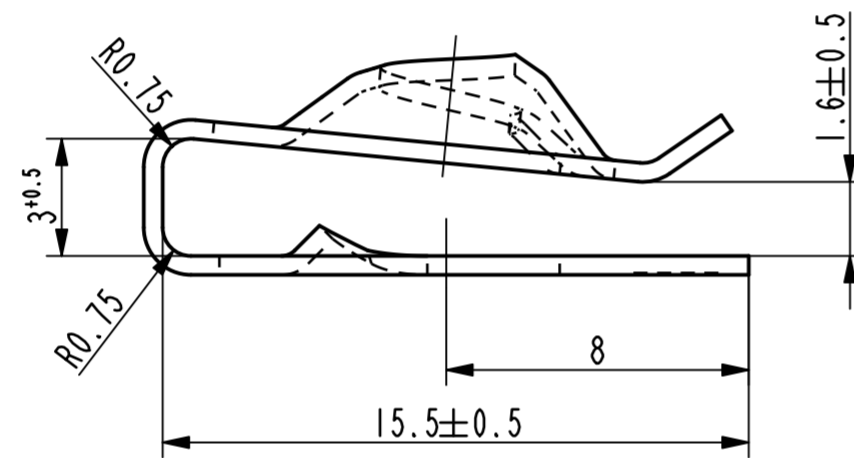
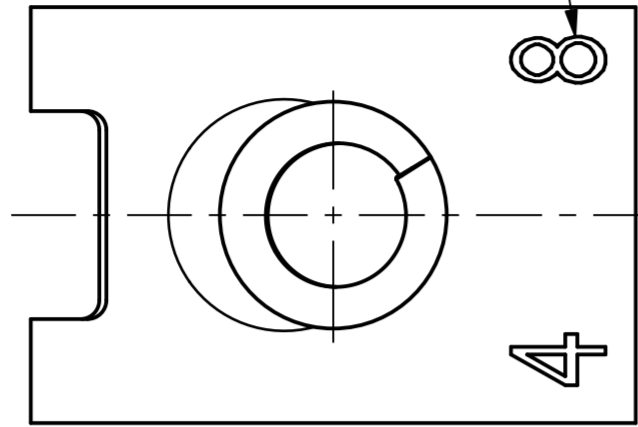
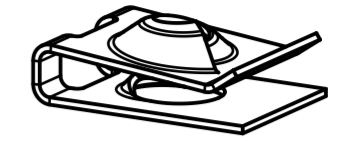




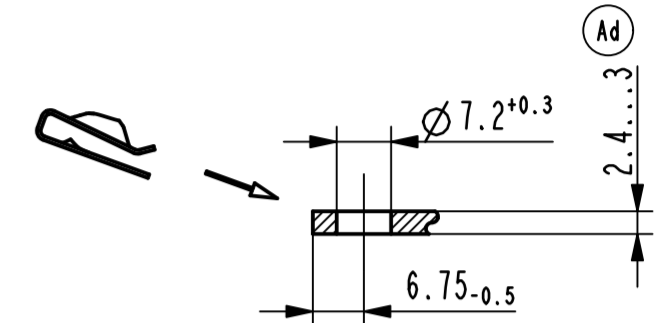
Kennzeichnung wahlweise zulässig /
marking alternatively permissible



Vor Auslegung einer automatisierten Verarbeitung des Teils sollte Rücksprache mit Fa. A.Raymond gehalten werden.
Fully automatic processing of the part requires prior consultation with A.Raymond GmbH.



3D Ansicht /
isometrical view
2:1



Einbausituation /
assembly situation
1:1

-	-	-	-	-
-	-	-	-	-
-	-	-	-	-
-	-	-	-	-
-	-	-	-	-
-	-	-	-	-
-	-	-	-	-
-	-	-	-	-
Ad	1x	Befestigungsdicke 2.4...3	11.07.13	RaW
Ac	-	Oberflaechenvariante entfernt (3400, 7420)	15.02.11	mj
Rev.	Anzahl/ quantity	Aenderungsbeschreibung / modification description	Datum/date	Name

ARaymond
A RAYMOND GmbH & Co.KG
Teichstrasse 57
Germany - 79511 Loerrach
Phone +49 (0) 7621 174-0
Fax +49 (0) 7621 174-225

Bei Verständnisproblemen beantragen Sie bitte beim Absender die deutsche Fassung vor jeder Anwendung.
"CONDITIONS OF USE"
This drawing and all information (the "Drawing") disclosed are the exclusive property of A.Raymond.
By using this Drawing the Addressee acknowledges and accepts that this Drawing
(1) is covered by A.Raymond' intellectual property rights or know-how and
(2) is provided under the following conditions who represent a Deposit Agreement.
This Drawing is for Addressee' internal use only limited to its estimation.
Without prior written consent of A.Raymond, no permission or rights for any purpose, is hereby granted, such as, without any limitation,
(1) the copy, in part or entirely
(2) and/or the presentation, in part or entirely, to any other third party outside the Addressee' company or in the company but with no interest
(3) and/or the distribution of the Drawing, in part or entirely, in any medium
(4) and/or the creation of any derivative work.
In case of breach of these conditions, Addressee shall indemnify A.Raymond from and against all damages (compensatory or consequential),
costs, expenses and charges, caused or arising out of or attributable to its willful misconduct, fraud, negligence, infringement of
A.Raymond' intellectual property rights. If the Addressee does not accept these conditions, please notify A.Raymond' sender immediately.

Intellectual property rights	vorbehalten / all rights reserved		Classification code	AABAE	
Ersatz fuer/ substitute for	011967.c.01/Ab/16.08.2006	Entw.Ref./ dev.ref.	Projekt-Nr./ project no.		
Masstab/ scale	5:1	Allgemeintoleranz/ general tolerance	Datum/ date	15.02.2011	
Format	A2	±0.25 / ±3°	Erstellt von/ prepared by	M. Junge	
Projektion / projection	1st angle	Freigegeben/ approved	20130712082438		
Blechklaesse/ met. thickness DIN EN 10140	0.50	Volumen/ volume (mm³)	157.2	Gewicht/ weight (g)	1.3

Oberfl./
finish
metallhaltige Korrosionsschutzbeschichtung, Farbe silber
metallic corrosion protection coated, colour silver
Oberfl. Code/
finish code
5410

Werkstoffbehandl./
material treatment
zwischenstufenverguetet / austempered
375 ... 475 HV 5

Werkstoff/
material
C67S DIN EN 10132-4
Mat. code
1000

Bezeichnung/
title
Blechmutter
fuer Gewinde EN ISO 1478-ST4.8
sheet metal nut
for thread EN ISO 1478-ST4.8

Teil-Nr./
part no.
011967-0-02
Drawing type
C:Customer

011967-0-07	metallhaltige Korrosionsschutzbeschichtung, Farbe silber, GZ metallic corrosion protection coated, colour silver, lubricated	4001
011967-0-06	verzinkt / passiviert farblos zinc plated / passivated colourless	3250
011967-0-05	metallhaltige Korrosionsschutzbeschichtung, Farbe schwarz metallic corrosion protection coated, colour black	5451
011967-0-03	verzinkt / metallhaltige Korrosionsschutzbeschichtung, Farbe silber zinc plated / metallic corrosion protection coated, colour silver	5500
Teil-Nr. / part no.	Oberflaeche / Farbe / finish / colour	Oberfl. Code/ finish code
Ausfuhrung / Execution		

Kundenteile-Nr. / customer part no. -
Blatt / sheet 1 / 1
CAD system & version ProE WF4
Dateiname / filename 011967-0C00