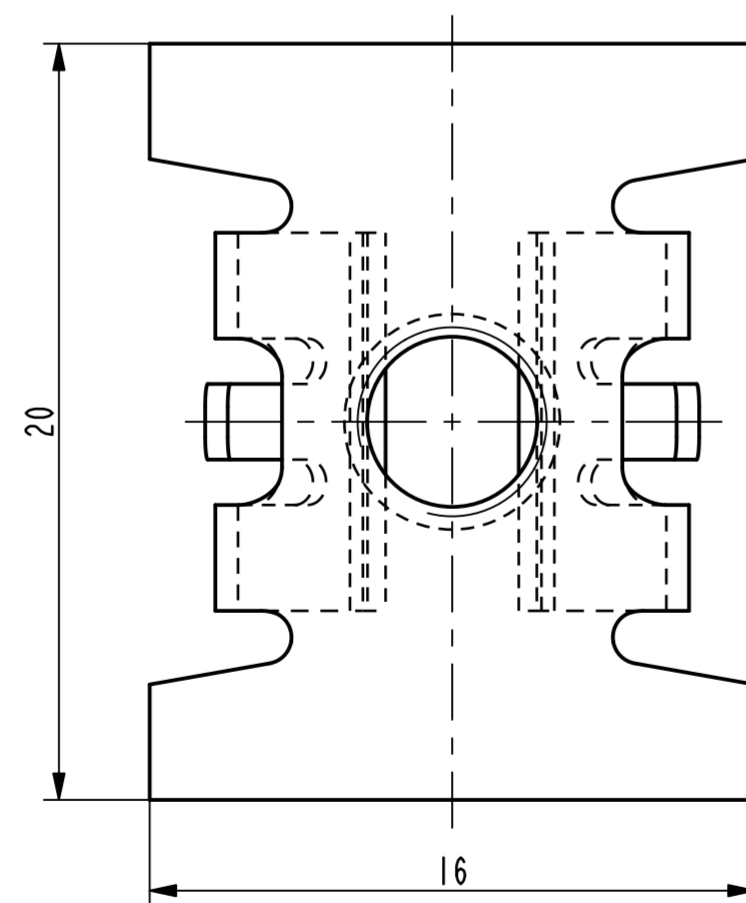
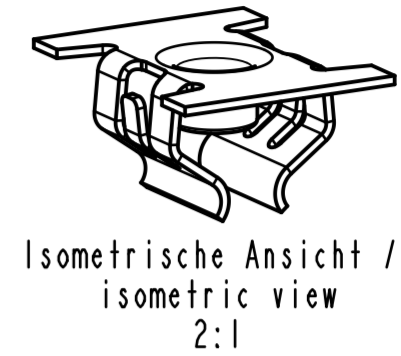
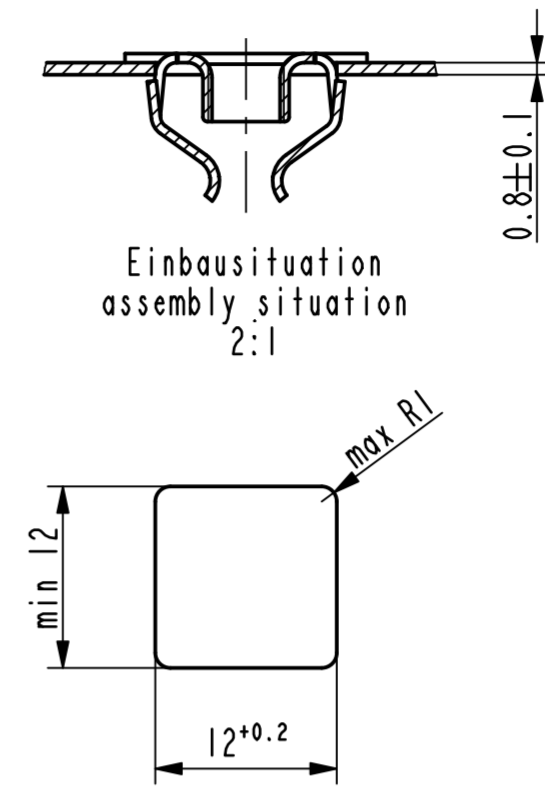
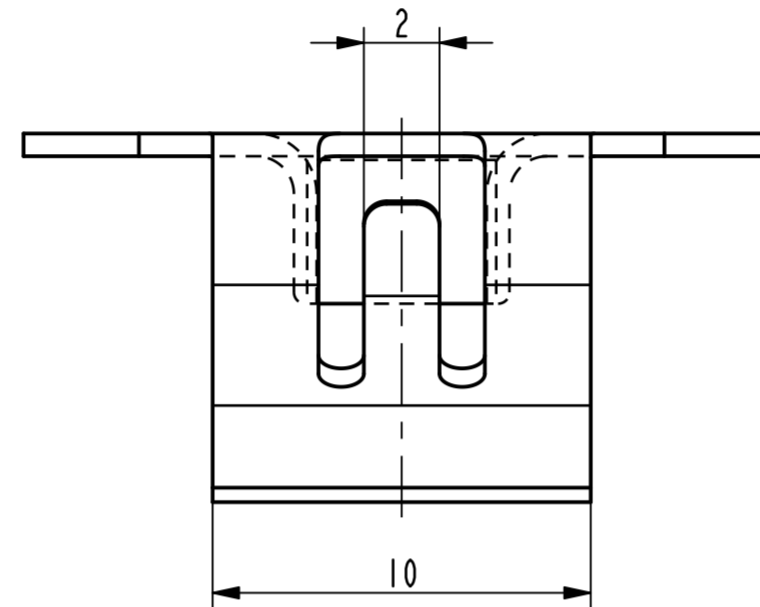
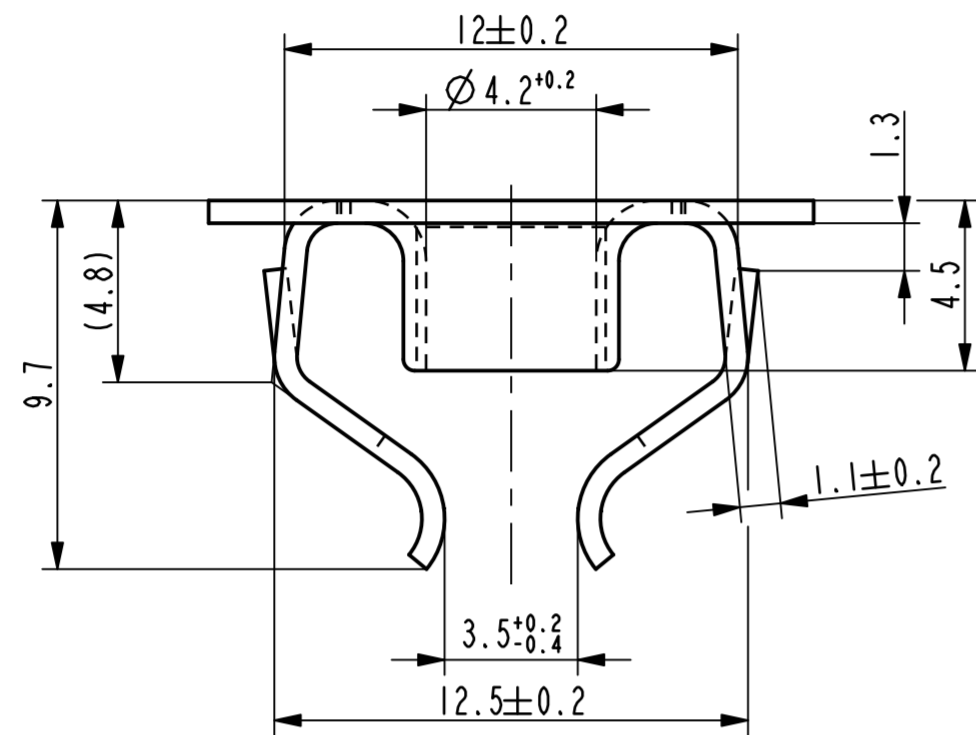


Schwergaengigkeit des Gewindes durch Oberflaechenbeschichtung zulaessig / slow thread engagement caused by the surface finish permissible

Gewindedurchzug kann nur mit lehrenhaltiger M5 Schraube geprueft werden / the thread strength can be tested only with a calibrated M5 screw

Vor Auslegung einer automatisierten Verarbeitung des Teils sollte Ruecksprache mit Fa. A.Raymond gehalten werden. Fully automatic processing of the part requires prior consultation with A.Raymond GmbH.



<http://www.cergy-vis.fr>
[CERGY-VIS]
 ET SI ON PARLAIT SERVICE

Ab	-	-	-	-	-
Rev.	Anzahl/quantity	Aenderungsbeschreibung / modification description	Datum/date	Name	

Ab - Zeichnung ueberarbeitet nach AR-Gruppenstandard, Teil unveraendert 10.10.12 mj



Teichstrasse 57
 Germany - 79511 Loerrach
 Phone +49 (0) 7621 174-0
 Fax +49 (0) 7621 174-225

Bei Verstaendnisproblemen beantragen Sie bitte beim Absender die deutsche Fassung vor jeder Anwendung.
"CONDITIONS OF USE"
 This drawing and all information (the "Drawing") disclosed are the exclusive property of A.Raymond. By using this Drawing the Addressee acknowledges and accepts that this Drawing (1) is covered by A.Raymond' intellectual property rights or know-how and (2) is provided under the following conditions who represent a Deposit Agreement. This Drawing is for Addressee' internal use only limited to its estimation. Without prior written consent of A.Raymond, no permission or rights for any purpose, is hereby granted, such as, without any limitation, (3) the copy, in part or entirely, (4) and/or the presentation, in part or entirely, to any other third party outside the Addressee' company or in the company but with no interest (5) and/or the distribution of the Drawing, in part or entirely, in any medium (6) and/or the creation of any derivative work. In case of breach of these conditions, Addressee shall indemnify A.Raymond from and against all damages (compensatory or consequential), costs, expenses and charges, caused or arising out of or attributable to its willful misconduct, fraud, negligence, infringement of A.Raymond' intellectual property rights. If the Addressee does not accept these conditions, please notify A.Raymond' sender immediately.

Schutzrechte/patent rights	vorbehalten / all rights reserved		Resch Code/classification	AC-CB					
Ersatz fuer/substitute for	212657.c.01/Aa/29.07.2008	Entw.Ref./dev.ref.	Projekt-Nr./project no.	63227					
Masstab/scale	5:1	Format	A2	Allgemeintoleranz/general tolerance	±0.3 / ±5°	Datum/date	10.10.2012	Erstellt von/prepared by	M. Junge
Projektion / projection	First angle	ALL DIMENSIONS ARE IN MILLIMETERS		Freigegeben/approved	20121012065109	Volumen/volume (mm³)	273.2	Gewicht/weight (g)	2.2
Blechklaesse/ sheet thickness	DIN EN 10140		0.60						

Oberfl./finish: metallhaltige Korrosionsschutzbeschichtung, Farbe schwarz, GZ / metallic corrosion protection coated, colour black, lubricated
 Oberfl. Code/finish code: 5453

Werkstoffbehandl./material treatment: zwischenstufenverguetet / austempered 365 ... 465 HV 5

Werkstoff/material: C45E DIN EN 10132-3
 Met. code: 1040

Bezeichnung/title: Blechmutter fuer Gewinde M5 / sheet metal nut for thread M5

Teil-Nr./part no.: 212657-0-01
 Drawing type: C:Customer

Teil-Nr. / part no.	-	Oberflaeche / Farbe / finish / colour	-	Oberfl. Code / finish code	-
Ausfuhrung / Execution					
Kundenteile-Nr. / customer part no.	-	Dateiname / filename		212657-0C00	Blatt / sheet 1 / 1
CAD system & version ProE WF4					